

## 11-1041: Polyclonal Antibody to DEPTOR/DEPDC6

<b>Clonality :</b>	Polyclonal
<b>Application :</b>	WB
<b>Reactivity :</b>	Human
<b>Gene :</b>	DEPTOR
<b>Gene ID :</b>	64798
<b>Uniprot ID :</b>	Q8TB45
<b>Format :</b>	Purified
<b>Alternative Name :</b>	DEPTOR,DEPDC6
<b>Isotype :</b>	Rabbit IgG
<b>Immunogen Information :</b>	A partial length recombinant DEPTOR/DEPDC6 protein (amino acids 200-400) was used as the immunogen for this antibody.

### Description

DEPTOR is an mTOR inhibitor whose expression is negatively regulated by mTOR. DEPTOR expression is required to maintain PI3K and Akt activation and to inhibit apoptosis. DEPTOR is expressed in different microvascular ECs (endothelial cells). It plays a key role in maintaining stem cell pluripotency by limiting mTOR activity in undifferentiated embryonic stem cells (ESCs). It is overexpressed in RPMI-8226 human multiple myeloma cells, and plays an important role in maintaining cell survival.

### Product Info

<b>Amount :</b>	25 µg / 100 µg
<b>Purification :</b>	Protein A Chromatography
<b>Content :</b>	25 µg in 50 µl/100 µg in 200 µl PBS containing 0.05% BSA and 0.05% sodium azide. Sodium azide is highly toxic.
<b>Storage condition :</b>	Store the antibody at 4°C, stable for 6 months. For long-term storage, store at -20°C. Avoid repeated freeze and thaw cycles.

### Application Note

Western blot analysis: 1-2 µg/ml

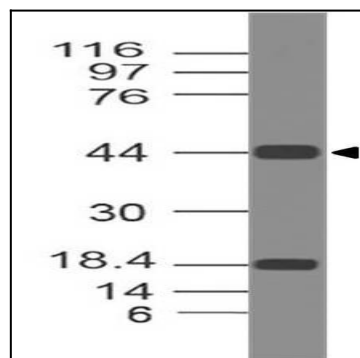


Fig-1: Western blot analysis of DEPTOR/DEPDC6. Anti-DEPTOR/DEPDC6 antibody (11-1041) was used at 2 µg/ml on h Liver lysate.