

## 11-7505: Polyclonal Antibody to Leucine rich alpha 2 glycoprotein1

<b>Clonality :</b>	Polyclonal
<b>Application :</b>	WB
<b>Reactivity :</b>	Human
<b>Gene :</b>	LRG1
<b>Gene ID :</b>	116844
<b>Uniprot ID :</b>	P02750
<b>Format :</b>	Purified
<b>Alternative Name :</b>	LRG
<b>Isotype :</b>	Rabbit IgG

**Immunogen Information :** A partial length recombinant Leucine rich alpha 2 glycoprotein1 protein (amino acids 130-340) was used as the immunogen for this antibody.

### Product Info

<b>Amount :</b>	25 µg / 100 µg
<b>Purification :</b>	Protein A Chromatography
<b>Content :</b>	25 µg in 50 µl/100 µg in 200 µl PBS containing 0.05% BSA and 0.05% sodium azide. Sodium azide is highly toxic.
<b>Storage condition :</b>	Store the antibody at 4°C, stable for 6 months. For long-term storage, store at -20°C. Avoid repeated freeze and thaw cycles.

### Application Note

Western blot analysis: 2-4 µg/ml

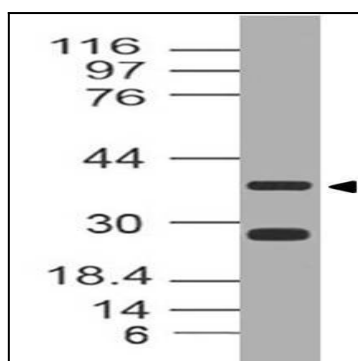


Fig-1: Western blot analysis of Leucine rich alpha 2 glycoprotein1. Anti-Leucine rich alpha 2 glycoprotein1 antibody (11-7505) was used at 2 µg/ml on Jurkat lysate.