

### 36-1406: Monoclonal Antibody to Ep-CAM / CD326 (Epithelial Marker)(Clone : SPM528)

<b>Clonality :</b>	Monoclonal
<b>Clone Name :</b>	SPM528
<b>Application :</b>	FACS,IF,WB,IHC
<b>Reactivity :</b>	Human
<b>Gene :</b>	EPCAM
<b>Gene ID :</b>	4072
<b>Uniprot ID :</b>	P16422
<b>Format :</b>	Purified
<b>Alternative Name :</b>	EPCAM,GA733-2,M1S2,M4S1,MIC18,TACSTD1,TROP1
<b>Isotype :</b>	Mouse IgG1, kappa
<b>Immunogen Information :</b>	Neuraminidase treated GLS-1 human small cell lung carcinoma cells

#### Description

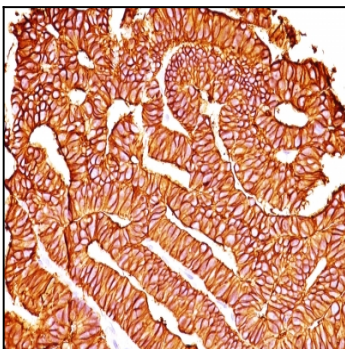
Binding epitope of this antibody is located in the first EGF-like repeat domain (EGF1) between amino acids 27-59 of Ep-CAM. EGP40 is a 40-43kDa transmembrane epithelial glycoprotein, also identified as epithelial specific antigen (ESA), or epithelial cellular adhesion molecule (Ep-CAM). It is expressed on baso-lateral cell surface in most simple epithelia and a vast majority of carcinomas. This antibody has been used to distinguish adenocarcinoma from pleural mesothelioma and hepatocellular carcinoma. This antibody is also useful in distinguishing serous carcinomas of the ovary from mesothelioma.

#### Product Info

<b>Amount :</b>	100 µg
<b>Purification :</b>	Affinity Chromatography
<b>Content :</b>	100 µg in 500 µl PBS containing 0.05% BSA and 0.05% sodium azide. Sodium azide is highly toxic.
<b>Storage condition :</b>	Store the antibody at 4°C; stable for 6 months. For long-term storage; store at -20°C. Avoid repeated freeze and thaw cycles.

#### Application Note

Flow Cytometry (5-10ul/million cells); Immunofluorescence (1:50-1:100); Western Blot (1:100-1:200); Immunohistochemistry (Formalin-fixed) (1:100-1:200 for 30 min at RT)(Staining of formalin/paraffin tissues REQUIRES digestion of tissue sections with pepsin at 1mg/ml Tris-HCl, pH 2.0 for 15 min at RT or 10 min at 37C)



Formalin-fixed, paraffin-embedded human Colon Carcinoma stained with Ep-CAM Ab (SPM528).