

### 36-1445: Monoclonal Antibody to MUC1 / EMA / CD227 (Epithelial Marker)(Clone : MUC1/967)

<b>Clonality :</b>	Monoclonal
<b>Clone Name :</b>	MUC1/967
<b>Application :</b>	WB,FACS,IF,IHC
<b>Reactivity :</b>	Human
<b>Gene :</b>	MUC1
<b>Gene ID :</b>	4582
<b>Uniprot ID :</b>	P15941
<b>Format :</b>	Purified
<b>Alternative Name :</b>	MUC1,PUM
<b>Isotype :</b>	Mouse IgG1, kappa
<b>Immunogen Information :</b>	Human milk-fat globule membranes (HMFGM)

#### Description

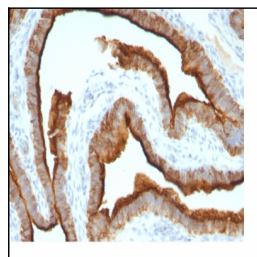
This MAb recognizes full-length MUC1 in a glycosylation-independent manner and can bind to the fully glycosylated protein. The dominant epitope of this MAb is APDTR in the VNTR region. It reacts with the core peptide of the MUC1 protein, which is a member of a family of mucin glycoproteins that are characterized by high carbohydrate content, O-linked oligosaccharides, high molecular weight (>200kDa) and an amino acid composition rich in serine, threonine, proline and glycine. The core protein contains a domain of 20 amino-acid tandem repeats that functions as multiple epitopes for the MAb. Incomplete glycosylation of some tumor-associated mucins may lead to variable unmasking of the multiple peptide epitopes leading to the observed differences in staining intensity between normal and malignant tissues. This MAb reacts with both normal and malignant epithelia of various tissues including breast and colon.

#### Product Info

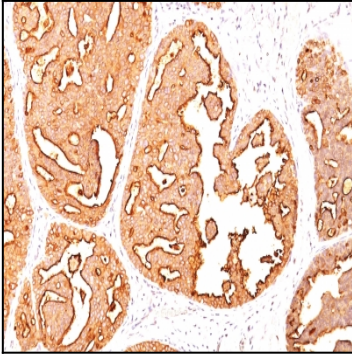
<b>Amount :</b>	100 µg
<b>Purification :</b>	Affinity Chromatography
<b>Content :</b>	100 µg in 500 µl PBS containing 0.05% BSA and 0.05% sodium azide. Sodium azide is highly toxic.
<b>Storage condition :</b>	Store the antibody at 4°C; stable for 6 months. For long-term storage; store at -20°C. Avoid repeated freeze and thaw cycles.

#### Application Note

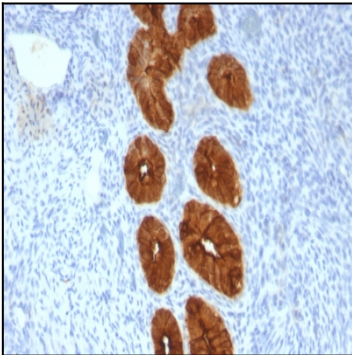
Western Blot (1-2ug/ml); Flow Cytometry (0.5-1ug/million cells); Immunofluorescence (1-2ug/ml); Immunohistology (Formalin-paraffin) (0.25-0.5ug/ml for 30 minutes at RT),(Staining of formalin-fixed tissues requires boiling tissue sections in 10mM citrate buffer, pH 6.0, for 10-20 min followed by cooling at RT for 20 minutes),



Formalin-fixed, paraffin-embedded human Ovarian Carcinoma stained with EMA Monoclonal Antibody (MUC1/967).



Formalin-fixed, paraffin-embedded human Breast Carcinoma stained with EMA Monoclonal Antibody (MUC1/967).



Formalin-fixed, paraffin-embedded human Endometrial Carcinoma stained with EMA Monoclonal Antibody (MUC1/967).