

### 36-1446: Monoclonal Antibody to MUC1 / EMA / CD227 (Epithelial Marker)(Clone : MUC1/520)

|                                |  |
|--------------------------------|--|
| <b>Clonality :</b>             | Monoclonal                               |
| <b>Clone Name :</b>            | MUC1/520                                 |
| <b>Application :</b>           | IHC                                      |
| <b>Reactivity :</b>            | Human                                    |
| <b>Gene :</b>                  | MUC1                                     |
| <b>Gene ID :</b>               | 4582                                     |
| <b>Uniprot ID :</b>            | P15941                                   |
| <b>Format :</b>                | Purified                                 |
| <b>Alternative Name :</b>      | MUC1,PUM                                 |
| <b>Isotype :</b>               | Mouse IgG2a, lambda                      |
| <b>Immunogen Information :</b> | Human milk-fat globule membranes (HMFGM) |

#### Description

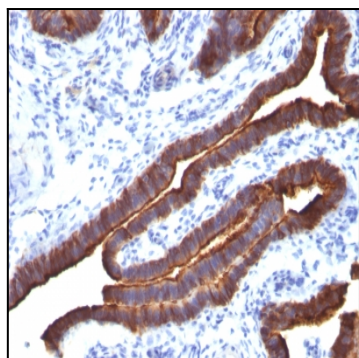
In Western blotting, it recognizes proteins in MW range of 265-400kDa, identified as different glycoforms of EMA. EMA may provide a protective layer on epithelial cells against bacterial and enzyme attack. In immunohistochemical assays, it superbly stains routine formalin/paraffin carcinomas. Antibody to EMA is useful as a pan-epithelial marker for detecting early metastatic loci of carcinoma in bone marrow or liver.

#### Product Info

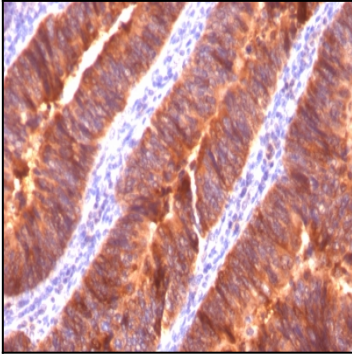
|                            |   |
|----------------------------|---|
| <b>Amount :</b>            | 100 µg  |
| <b>Purification :</b>      | Affinity Chromatography   |
| <b>Content :</b>           | 100 µg in 500 µl PBS containing 0.05% BSA and 0.05% sodium azide. Sodium azide is highly toxic.                               |
| <b>Storage condition :</b> | Store the antibody at 4°C; stable for 6 months. For long-term storage; store at -20°C. Avoid repeated freeze and thaw cycles. |

#### Application Note

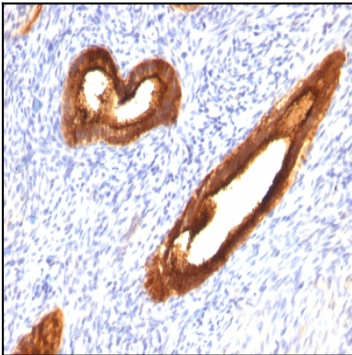
Immunohistology (Formalin-fixed) (0.5-1.0ug/ml for 30 min at RT),(Staining of formalin-fixed tissues requires boiling tissue sections in 10mM citrate buffer, pH 6.0, for 10-20 min followed by cooling at RT for 20 minutes),



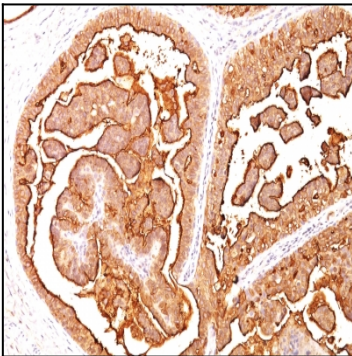
Formalin-fixed, paraffin-embedded human Ovarian Carcinoma stained with MUC-1 / EMA Monoclonal Antibody (MUC1/520).



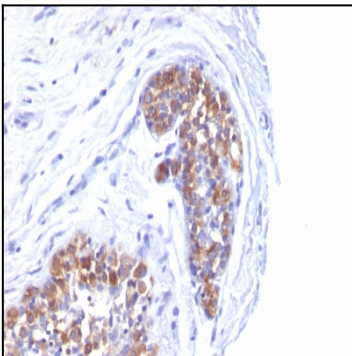
Formalin-fixed, paraffin-embedded human Colon Carcinoma stained with MUC-1 / EMA Monoclonal Antibody (MUC1/520).



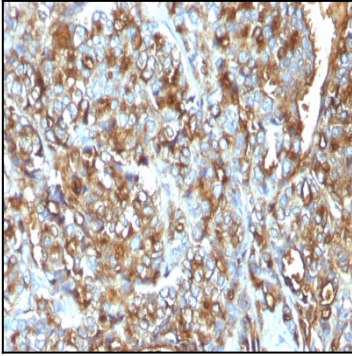
Formalin-fixed, paraffin-embedded human Endometrial Carcinoma stained with MUC-1 / EMA Monoclonal Antibody (MUC1/520).



Formalin-fixed, paraffin-embedded human Breast Carcinoma stained with MUC-1 / EMA Monoclonal Antibody (MUC1/520).



Formalin-fixed, paraffin-embedded human Breast Carcinoma stained with MUC-1 / EMA Monoclonal Antibody (MUC1/520).



Formalin-fixed, paraffin-embedded human Breast Carcinoma stained with MUC-1 /  
EMA Monoclonal Antibody (MUC1/520).