

### 36-1447: Monoclonal Antibody to MUC1 / EMA / CD227 (Epithelial Marker)(Clone : GP1.4)

<b>Clonality :</b>	Monoclonal
<b>Clone Name :</b>	GP1.4
<b>Application :</b>	WB,IHC
<b>Reactivity :</b>	Human
<b>Gene :</b>	MUC1
<b>Gene ID :</b>	4582
<b>Uniprot ID :</b>	P15941
<b>Format :</b>	Purified
<b>Alternative Name :</b>	MUC1,PUM
<b>Isotype :</b>	Mouse IgG1, kappa
<b>Immunogen Information :</b>	Human milk fat globule membranes

#### Description

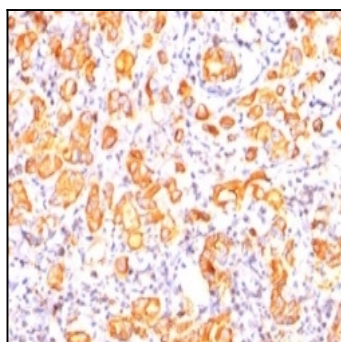
In Western blotting, it recognizes proteins in MW range of 265-400kDa, identified as different glycoforms of EMA. This MAb reacts with the DTRP epitope in the tandem repeats. The  $\alpha$  subunit has cell adhesive properties. It can act both as an adhesion and an anti-adhesion protein. EMA may provide a protective layer on epithelial cells against bacterial and enzyme attack. The  $\beta$  subunit contains a C-terminal domain, which is involved in cell signaling, through phosphorylations and protein-protein interactions. In immunohistochemical assays, it superbly stains routine formalin/paraffin carcinoma tissues. Antibody to EMA is useful as a pan-epithelial marker for detecting early metastatic loci of carcinoma in bone marrow or liver.

#### Product Info

<b>Amount :</b>	100 $\mu$ g
<b>Purification :</b>	Affinity Chromatography
<b>Content :</b>	100 $\mu$ g in 500 $\mu$ l PBS containing 0.05% BSA and 0.05% sodium azide. Sodium azide is highly toxic.
<b>Storage condition :</b>	Store the antibody at 4°C; stable for 6 months. For long-term storage; store at -20°C. Avoid repeated freeze and thaw cycles.

#### Application Note

Western Blot (1-2ug/ml); ,Immunohistology (Formalin-fixed) (0.5-1.0ug/ml for 30 min at RT),(Staining of formalin-fixed tissues requires boiling tissue sections in 10mM citrate buffer, pH 6.0, for 10-20 min followed by cooling at RT for 20 minutes),



Formalin-fixed, paraffin-embedded human Breast Carcinoma stained with EMA Monoclonal Antibody (GP1.4).