

## 10-4040: Monoclonal Antibody to Siglec-H (Clone: ABM2H66)

Clonality :	Monoclonal
Clone Name :	ABM2H66
Application :	WB
Reactivity :	Mouse
Gene :	Siglech
Gene ID :	233274
Uniprot ID :	Q3Y597
Format :	Purified
Alternative Name :	SIGLEC-H
Isotype :	Rat IgG2a, Kappa
Immunogen Information :	A partial length recombinant mouse Siglec-H protein (amino acids 109-309) was used as the immunogen for this antibody.

### Product Info

Amount :	25 µg / 100 µg
Purification :	Protein G Chromatography
Content :	25 µg in 50 µl/100 µg in 200 µl PBS containing 0.05% BSA and 0.05% sodium azide. Sodium azide is highly toxic.
Storage condition :	Store the antibody at 4°C, stable for 6 months. For long-term storage, store at -20°C. Avoid repeated freeze and thaw cycles.

### Application Note

WB: 4-6 µg/ml

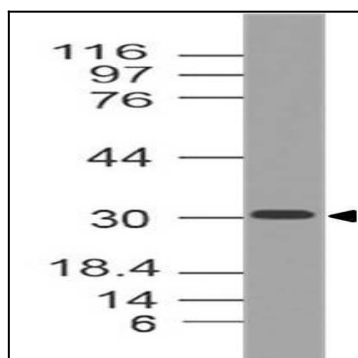


Figure-1: Western blot analysis of Siglec-H. Anti-Siglec-H antibody (Clone: ABM2H66) was used at 4 µg/ml on mHeart lysate.