

36-1454: Monoclonal Antibody to MUC1 / EMA / CD227 (Epithelial Marker)(Clone : SPM492)

Clonality :	Monoclonal
Clone Name :	SPM492
Application :	ELISA,FACS,IF,IHC
Reactivity :	Human, Mouse
Gene :	MUC1
Gene ID :	4582
Uniprot ID :	P15941
Format :	Purified
Alternative Name :	MUC1,PUM
Isotype :	Mouse IgG1, kappa
Immunogen Information :	Breast Cancer Cell line ZR75-1

Description

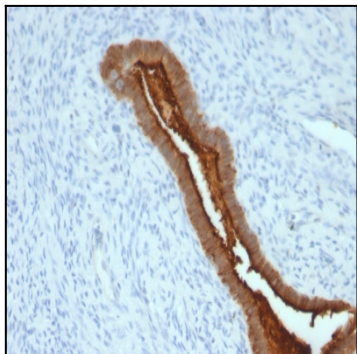
This MAb reacts with MUC1. The dominant epitope of this MAb has not yet been determined. MUC1 is a large cell surface mucin glycoprotein expressed by most glandular and ductal epithelial cells and some hematopoietic cell lineages. It is expressed on most secretory epithelium, including mammary gland and some hematopoietic cells. It is expressed abundantly in lactating mammary glands and over expressed abundantly in >90% breast carcinomas and metastases. Transgenic MUC1 has been shown to associate with all four c-erbB receptors and localize with c-erbB1 (EGFR) in lactating glands. The MUC1 gene contains seven exons and produces several different alternatively spliced variants. The major expressed form of MUC1 uses all seven exons and is a type 1 transmembrane protein with a large extracellular tandem repeat domain. The tandem repeat domain is highly O glycosylated and alterations in glycosylation have been shown in epithelial cancer cells. Antibody to EMA is useful as a pan-epithelial marker for detecting early metastatic loci of carcinoma in bone marrow or liver.

Product Info

Amount :	100 µg
Purification :	Affinity Chromatography
Content :	100 µg in 500 µl PBS containing 0.05% BSA and 0.05% sodium azide. Sodium azide is highly toxic.
Storage condition :	Store the antibody at 4°C; stable for 6 months. For long-term storage; store at -20°C. Avoid repeated freeze and thaw cycles.

Application Note

ELISA (For coating use Ab at 2-5ug/ml, order Ab without BSA) (Very good capturing Ab); Flow Cytometry (0.25-0.5ug/million cells); Immunofluorescence (1-2ug/ml); Immunohistochemistry (Formalin-fixed) (1-2ug/ml for 30 minutes at RT)(Staining of formalin-fixed tissues requires heating tissue sections in 10mM Tris with 1mM EDTA, pH 9.0, for 45 min at 95°C followed by cooling at RT for 20 minutes);



Formalin-fixed, paraffin-embedded human Endometrial Carcinoma stained with EMA Monoclonal Antibody (SPM492).