

10-7599-F: Monoclonal antibody to PD-L1 (Clone: ABM5F25)

Clonality :	Monoclonal
Clone Name :	ABM5F25
Application :	FACS
Reactivity :	Human
Conjugate :	FITC
Gene :	CD274
Gene ID :	29126
Uniprot ID :	Q9NZQ7
Format :	Purified
Alternative Name :	CD274,B7H1,PDCD1L1,PDCD1LG1,PDL1
Isotype :	Mouse IgG2b Kappa
Immunogen Information :	A partial length recombinant protein of PD-L1 (amino acid 13-224) was used as the immunogen for this antibody.

Description

PD-L1 (CD274/B7-H1) is a critical membrane-bound costimulatory molecule belongs to the B7 superfamily that inhibits immune responses through its receptor, PD-1 and PD-L1 play a key role in the pathogenesis of inflammatory diseases (programmed death 1). It is widely expressed in the mononuclear phagocyte system (MPS), may co-stimulate T cells and regulates inflammatory responses. PD-L1 exerts inflammation regulatory functions via a negative co-stimulatory effect on T cell functions to inhibit cytokine secretion, facilitate apoptosis of activated T cells and induce T cell anergy. Aberrant expression and dysregulation of CD274 have been reported during bacterial infection, inflammation and in numerous autoimmune diseases.

Product Info

Amount :	25 µg / 100 µg
Purification :	Protein G Chromatography
Content :	0.2 mg/ml in Tris buffer containing 0.05% Azide
Storage condition :	Store the antibody at 4°C

Application Note

FACS analysis: 1-2 µg/10⁶ cells

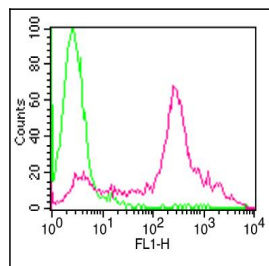


Fig-1: Cell Surface flow analysis of FITC conjugated PD-L1 in 3 days-PHA treated human PBMC cells using 1 µg/10⁶ cells of FITC conjugated PD-L1 antibody (Clone: ABM5F25). Green represents isotype control; red represents FITC conjugated anti-PD-L1 antibody.