

## 11-1043: Polyclonal Antibody to Diablo

**Clonality :** Polyclonal  
**Application :** WB  
**Reactivity :** Rat,Mouse,Human  
**Gene :** DIABLO  
**Gene ID :** 56616  
**Uniprot ID :** Q9NR28  
**Format :** Purified  
**Alternative Name :** SMAC  
**Isotype :** Rabbit IgG

**Immunogen Information :** Full length recombinant diablo protein was used as the immunogen for this antibody.

### Product Info

**Amount :** 25 µg / 100 µg  
**Purification :** Protein A Chromatography  
**Content :** 25 µg in 50 µl/100 µg in 200 µl PBS containing 0.05% BSA and 0.05% sodium azide. Sodium azide is highly toxic.  
**Storage condition :** Store the antibody at 4°C, stable for 6 months. For long-term storage, store at -20°C. Avoid repeated freeze and thaw cycles.

### Application Note

Western blot analysis: 1-2 µg/ml

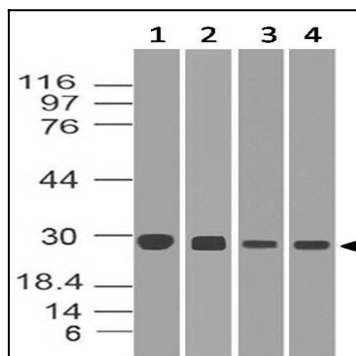


Figure-1: Western blot analysis of Diablo. Anti-Diablo antibody (11-1043) was used at 1 µg/ml on (1) h Spleen, (2) h Heart, (3) m Heart and (4) r Heart lysates.