

11-1044: Polyclonal Antibody to CIDE-B

Clonality :	Polyclonal
Application :	WB
Reactivity :	Human
Gene :	CIDEB
Gene ID :	27141
Uniprot ID :	Q9UHD4
Format :	Purified
Alternative Name :	CIDEB, Cell death-inducing DFFA-like effector B
Isotype :	Rabbit IgG
Immunogen Information :	Full length recombinant CIDE-B protein was used as the immunogen for this antibody.

Product Info

Amount :	25 µg / 100 µg
Purification :	Protein A Chromatography
Content :	25 µg in 50 µl/100 µg in 200 µl PBS containing 0.05% BSA and 0.05% sodium azide. Sodium azide is highly toxic.
Storage condition :	Store the antibody at 4°C, stable for 6 months. For long-term storage, store at -20°C. Avoid repeated freeze and thaw cycles.

Application Note

Western blot analysis: 1-2 µg/ml

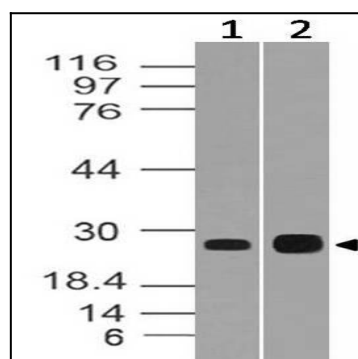


Figure-1: Western blot analysis of CIDE-B. Anti- CIDE-B antibody (11-1044) was used at 1 µg/ml on (1) h Kidney and (2) HT-29 lysates.