

11-4001: Polyclonal Antibody to mouse BTLA

Clonality :	Polyclonal
Application :	WB
Reactivity :	Mouse
Gene :	Btla
Gene ID :	208154
Uniprot ID :	Q7TSA3
Format :	Purified
Alternative Name :	Btla, CD272
Isotype :	Rabbit IgG
Immunogen Information :	A partial length recombinant mouse BTLA protein (amino acids 20-250) was used as the immunogen for this antibody.

Product Info

Amount :	25 µg / 100 µg
Purification :	Protein A Chromatography
Content :	25 µg in 50 µl/100 µg in 200 µl PBS containing 0.05% BSA and 0.05% sodium azide. Sodium azide is highly toxic.
Storage condition :	Store the antibody at 4°C, stable for 6 months. For long-term storage, store at -20°C. Avoid repeated freeze and thaw cycles.

Application Note

Western blot analysis: 4-5 µg/ml

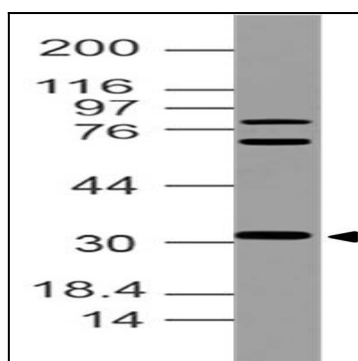


Figure-1: Western blot analysis of mouse BTLA. Anti- mouse BTLA antibody (11-4001) was used at 4 µg/ml on EL4 lysate.