

## 11-6010: Polyclonal Antibody to ERS25

Clonality :	Polyclonal
Application :	WB
Reactivity :	Mouse, Human
Gene :	TMED4
Gene ID :	222068
Uniprot ID :	Q7Z7H5
Format :	Purified
Alternative Name :	TMED4, ERS25
Isotype :	Rabbit IgG

**Immunogen Information :** Full length recombinant ERS25 protein was used as the immunogen for this antibody.

### Product Info

Amount :	25 µg / 100 µg
Purification :	Protein A Chromatography
Content :	25 µg in 50 µl/100 µg in 200 µl PBS containing 0.05% BSA and 0.05% sodium azide. Sodium azide is highly toxic.
Storage condition :	Store the antibody at 4°C, stable for 6 months. For long-term storage, store at -20°C. Avoid repeated freeze and thaw cycles.

### Application Note

Western blot analysis: 1-2 µg/ml

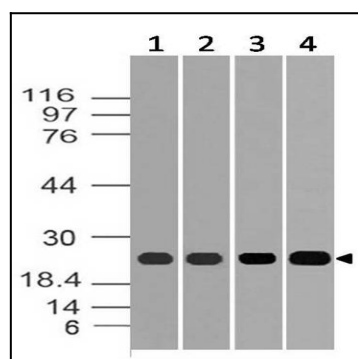


Figure-1: Western blot analysis of ERS25. Anti-ERS25 antibody (11-6010) was used at 1 µg/ml on (1) MCF-7, (2) HepG2, (3) 3T3 and (4) Raw lysates.