

## 10-1009: Monoclonal Antibody to Caspase-14 (Clone: ABM1B24)

<b>Clonality :</b>	Monoclonal
<b>Clone Name :</b>	ABM1B24
<b>Application :</b>	FACS
<b>Reactivity :</b>	Human
<b>Gene :</b>	CASP14
<b>Gene ID :</b>	23581
<b>Uniprot ID :</b>	P31944
<b>Format :</b>	Purified
<b>Alternative Name :</b>	CASP-14
<b>Isotype :</b>	Mouse IgG1 Kappa
<b>Immunogen Information :</b>	Full length recombinant protein of Caspase 14 was used as the immunogen for this antibody.

### Product Info

<b>Amount :</b>	25 µg / 100 µg
<b>Purification :</b>	Protein G Chromatography
<b>Content :</b>	100 µg in 200 µl PBS containing 0.05% BSA and 0.05% sodium azide. Sodium azide is highly toxic.
<b>Storage condition :</b>	Store the antibody at 4°C, stable for 6 months. For long-term storage, store at -20°C. Avoid repeated freeze and thaw cycles

### Application Note

FACS- 0.5-1 µg/ml

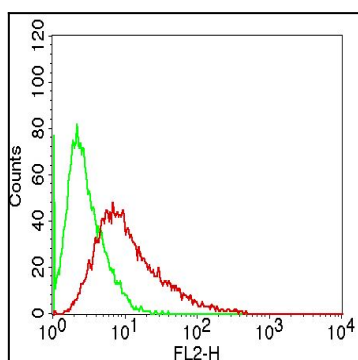


Figure-1: Intra cellular Flow analysis of Caspase-14 in HeLa cells using 0.5 µg/10<sup>6</sup> cells of Caspase-14 antibody (Clone: ABM1B24). Green represents isotype control; red represents anti-Caspase-14 antibody. Goat anti-mouse PE conjugate was used as secondary antibody.

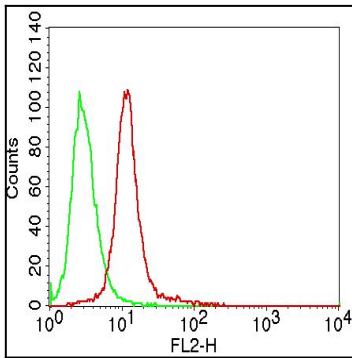


Figure-2 :Intra cellular Flow analysis of Caspase-14 in A431 cells using 0.5  $\mu\text{g}/10^6$  cells of Caspase-14 antibody (Clone: ABM1B24). Green represents isotype control; red represents anti-Caspase-14 antibody. Goat anti-mouse PE conjugate was used as secondary antibody.