

10-7615: Monoclonal antibody to MSI-1 (Clone: ABM5D50)

Clonality :	Monoclonal
Clone Name :	ABM5D50
Application :	FACS,WB
Reactivity :	Human
Gene :	MSI1
Gene ID :	4440
Uniprot ID :	O43347
Format :	Purified
Alternative Name :	RNA-binding protein Musashi homolog 1, Musashi-1
Isotype :	Mouse IgG2b Kappa
Immunogen Information :	A partial length recombinant protein of Msi-1 (amino acid 19-263) was used as the immunogen for this antibody.

Product Info

Amount :	25 µg / 100 µg
Purification :	Protein G Chromatography
Content :	25 µg in 50 µl/100 µg in 200 µl PBS containing 0.05% BSA and 0.05% sodium azide. Sodium azide is highly toxic.
Storage condition :	Store the antibody at 4°C; stable for 6 months. For long-term storage; store at -20°C. Avoid repeated freeze and thaw cycles

Application Note

Facs analysis: 2-4 µg/10⁶ Cells, Western blot analysis: 2-4 µg/ml

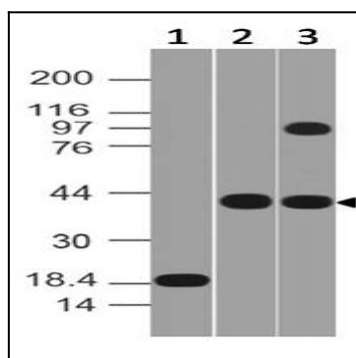


Figure-1: Western blot analysis of MSI-1. Anti-MSI1 was used at 0.5 µg/ml on Recombinant and 2 µg/ml in Pancrease and HepG2 Lysates.

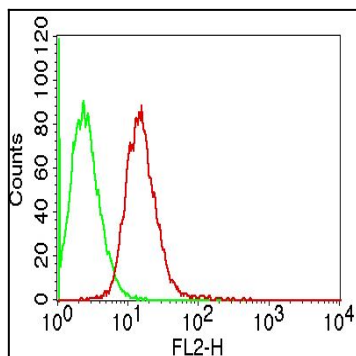


Figure-2: Intra cellular flow analysis of Msi-1 on HePG2 cells using 2 $\mu\text{g}/10^6$ cells of Msi-1 antibody (Clone: ABM5D50). Green represents isotype control; red represents anti-Msi-1 antibody. Goat anti-mouse PE conjugate was used as secondary antibody

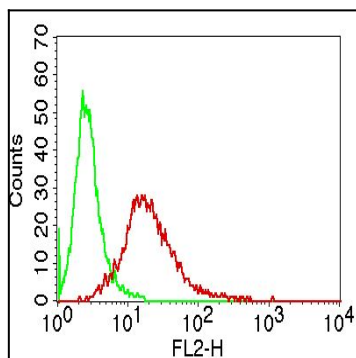


Figure-3: Intra cellular flow analysis of Msi-1 on HeLa cells using 2 $\mu\text{g}/10^6$ cells of Msi-1 antibody (Clone: ABM5D50). Green represents isotype control; red represents anti-Msi-1 antibody. Goat anti-mouse PE conjugate was used as secondary antibody.