

10-4180: Monoclonal antibody to CD5L (Clone: ABM55F1)

Clonality :	Monoclonal
Clone Name :	ABM55F1
Application :	FACS, WB
Reactivity :	Human
Gene :	CD5L
Gene ID :	922
Uniprot ID :	O43866
Format :	Purified
Alternative Name :	CD5 antigen-like, Apoptosis inhibitor expressed by macrophages, hAIM, IgM-associated peptide, SP-alpha
Isotype :	Mouse IgG2b Kappa
Immunogen Information :	A partial length recombinant protein of CD5L (amino acid 14-226) was used as the immunogen for this antibody.

Product Info

Amount :	25 µg / 100 µg
Purification :	Protein G Chromatography
Content :	25 µg in 50 µl/100 µg in 200 µl PBS containing 0.05% BSA and 0.05% sodium azide. Sodium azide is highly toxic.
Storage condition :	Store the antibody at 4°C, stable for 6 months. For long-term storage, store at -20°C. Avoid repeated freeze and thaw cycles.

Application Note

FACS analysis: 2-4 µg/10⁶ cells, Western blot analysis : 2-4 µg/ml

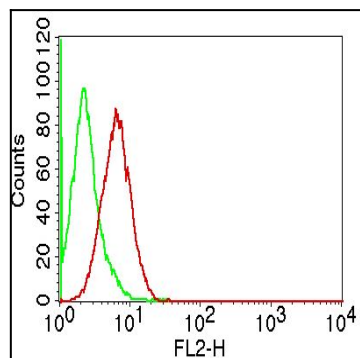


Figure-1: Intra cellular flow analysis of CD5L on Jurkat cells using 2 µg/10⁶ cells of CD5L antibody (Clone: ABM55F1). Green represents isotype control; red represents anti-CD5L antibody. Goat anti-mouse PE conjugate was used as secondary antibody

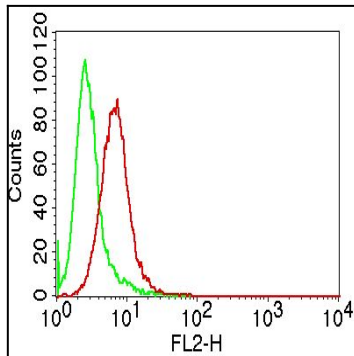


Figure-2: Intra cellular flow analysis of CD5L on Raji cells using 2 $\mu\text{g}/10^6$ cells of CD5L antibody (Clone: ABM55F1). Green represents isotype control; red represents anti-CD5L antibody. Goat anti-mouse PE conjugate was used as secondary antibody

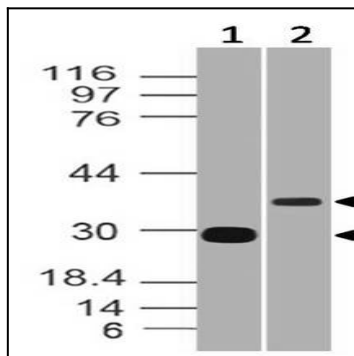


Figure-3: Western blot analysis of CD5L. Anti CD5L (Clone: ABM55F1) was used at 0.5 $\mu\text{g}/\text{ml}$ in Recombinant and 2 $\mu\text{g}/\text{ml}$ in h spleen lysates.