

10-7011: Monoclonal Antibody to MLH1 (Clone:ABM17C1)

Clonality :	Monoclonal
Clone Name :	ABM17C1
Application :	FACS,WB
Reactivity :	Human
Gene :	MLH1
Gene ID :	4292
Uniprot ID :	P40692
Format :	Purified
Alternative Name :	COCA2, MutL
Isotype :	mouse IgG1,Kappa
Immunogen Information :	A partial length recombinant MLH1 protein (amino acids 375-600) was used as the immunogen for this antibody.

Product Info

Amount :	25 µg / 100 µg
Purification :	Protein G Chromatography
Content :	25 µg in 50 µl/100 µg in 200 µl PBS containing 0.05% BSA and 0.05% sodium azide. Sodium azide is highly toxic.
Storage condition :	Store the antibody at 4°C, stable for 6 months. For long-term storage, store at -20°C. Avoid repeated freeze and thaw cycles.

Application Note

Western blot analysis: 4-6 µg/ml, Flowcytometric analysis: 2-4 µg/10⁶ Cells

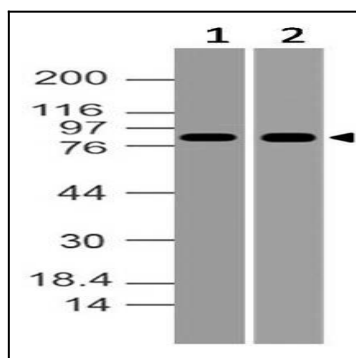


Figure-1: Western blot analysis of MLH1. Anti- MLH1 antibody (Clone: ABM17C1) was used at 4 µg/ml on (1) MCF-7 and (2) Raji lysates.

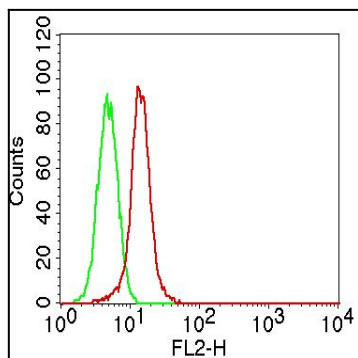


Figure-2: Intracellular flow cytometric analysis of MLH1 in A431 cells using 2 $\mu\text{g}/10^6$ cells of Anti-MLH1 (Clone: ABM17C1). Green represent isotype control and red represent Anti MLH1 antibody. PE conjugate Goat anti mouse IgG was used as secondary control