

10-4057: Monoclonal Antibody to TREX1 (Clone: ABM2A85)

Clonality :	Monoclonal
Clone Name :	ABM2A85
Application :	FACS, WB
Reactivity :	Human
Gene :	TREX1
Gene ID :	11277
Uniprot ID :	Q9NSU2
Format :	Purified
Alternative Name :	3'-5' exonuclease TREX1, DNase III
Isotype :	Mouse IgG2b, Kappa
Immunogen Information :	A partial length recombinant protein of TREX1 (amino acid 140-345) was used as the immunogen for this antibody.

Product Info

Amount :	25 µg / 100 µg
Purification :	Protein G Chromatography
Content :	25 µg in 50 µl/100 µg in 200 µl PBS containing 0.05% BSA and 0.05% sodium azide. Sodium azide is highly toxic.
Storage condition :	Store the antibody at 4°C, stable for 6 months. For long-term storage, store at -20°C. Avoid repeated freeze and thaw cycles.

Application Note

Western blot analysis : 4-6 µg/ml, Flowcytometric analysis- 2-4 µg/10⁶ Cells

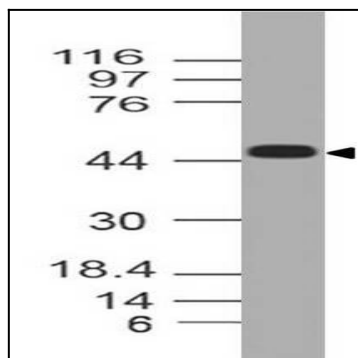


Figure-1: Western blot analysis of TREX1. Anti TREX1 (Clone: ABM2A85) was used at 4 µg/ml in Daudi lysate.

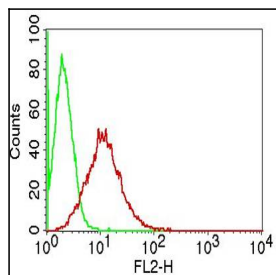


Figure-2: Intracellular flow cytometric analysis of TREX1 in A431 cells using 0.5 µg/10⁶ cells of Anti-TREX1 antibody (10-4057 Abeomics) . Green represent isotype control and red represent Anti-TREX1 antibody (Clone:ABM2A85). Goat anti-mouse PE conjugated secondary antibody (ABEOMICS) was used.

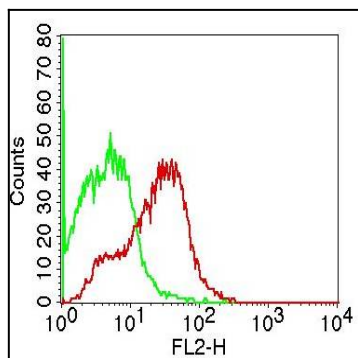


Figure-3: Intracellular flow cytometric analysis of TREX1 in HeLa cells using 0.5 $\mu\text{g}/10^6$ cells of Anti-TREX1 antibody (10-4057 Abcam). Green represent isotype control and red represent Anti-TREX1 antibody (Clone:ABM2A85). Goat anti-mouse PE conjugated secondary antibody (ABEOMICS) was used.