

## 10-3028: Monoclonal Antibody to EPS8 (Clone: ABM4H15)

<b>Clonality :</b>	Monoclonal
<b>Clone Name :</b>	ABM4H15
<b>Application :</b>	WB
<b>Reactivity :</b>	Human
<b>Gene :</b>	EPS8
<b>Gene ID :</b>	2059
<b>Uniprot ID :</b>	Q12929
<b>Format :</b>	Purified
<b>Alternative Name :</b>	Epidermal growth factor receptor kinase substrate 8
<b>Isotype :</b>	Mouse IgG1, Kappa
<b>Immunogen Information :</b>	A partial length recombinant protein of EPS8 (amino acid 610-822) was used as the immunogen for this antibody.

### Product Info

<b>Amount :</b>	25 µg / 100 µg
<b>Purification :</b>	Protein G Chromatography
<b>Content :</b>	25 µg in 50 µl/100 µg in 200 µl PBS containing 0.05% BSA and 0.05% sodium azide. Sodium azide is highly toxic.
<b>Storage condition :</b>	Store the antibody at 4°C, stable for 6 months. For long-term storage, store at -20°C. Avoid repeated freeze and thaw cycles.

### Application Note

Western blot analysis : 4-6 µg/ml

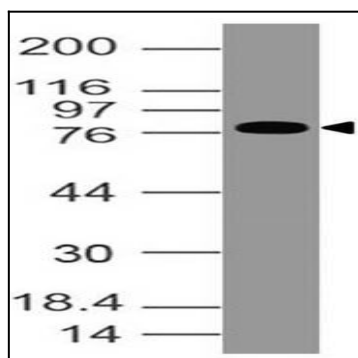


Figure-1: Western blot analysis of EPS8. Anti EPS8 (Clone: ABM4H15) was used at 4 µg/ml in SNU1 lysate.