

10-7619: Monoclonal Antibody to Galectin-1 (Clone: ABM55A5)

Clonality :	Monoclonal
Clone Name :	ABM55A5
Application :	FACS, WB
Reactivity :	Mouse, Human
Gene :	LGALS1
Gene ID :	3956
Uniprot ID :	P09382
Format :	Purified
Alternative Name :	14 kDa laminin-binding protein, 14 kDa lectin, Beta-galactoside-binding lectin L-14-1, Galaptin, HBL, HPL, Lactose-binding lectin 1, Lectin galactoside-binding soluble 1, Putative MAPK-activating protein PM12, S-Lac lectin 1
Isotype :	Mouse IgG2b, Kappa
Immunogen Information :	Full length recombinant Galectin-1 protein was used as the immunogen for this antibody.

Product Info

Amount :	25 µg / 100 µg
Purification :	Protein G Chromatography
Content :	25 µg in 50 µl/100 µg in 200 µl PBS containing 0.05% BSA and 0.05% sodium azide. Sodium azide is highly toxic.
Storage condition :	Store the antibody at 4°C; stable for 6 months. For long-term storage; store at -20°C. Avoid repeated freeze and thaw cycles

Application Note

Western blot analysis: 2-4 µg/ml, Facs analysis- 0.5-1 µg/10⁶ Cells

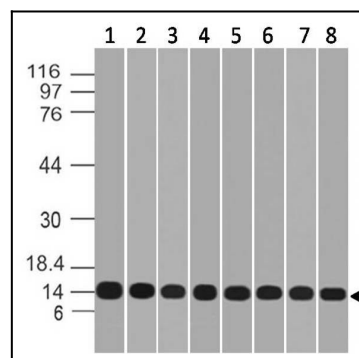


Figure:1- Western blot analysis of Galectin-1. Anti-Galectin-1 antibody (Clone: ABM55A5) was tested at 0.01 µg/ml on (1) Recombinant protein and 2 µg/ml on (2) HCT-116, (3) HeLa, (4) 3T3, (5) 293, (6) K562, (7) THP1 and (8) PC3 lysates.

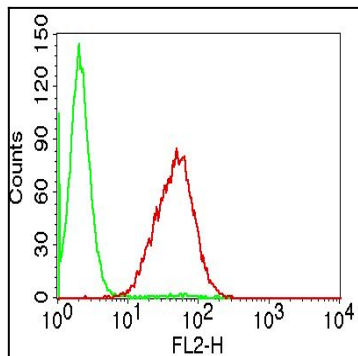


Figure:2- Intracellular flow analysis of Galectin-1 in U87 cell line using $0.5 \mu\text{g}/10^6$ cells of Galectin-1 antibody (Clone: ABM55A5). Green represents isotype control; red represents anti-Galectin-1 antibody (10-7619). Goat anti-mouse PE conjugate was used as secondary antibody.

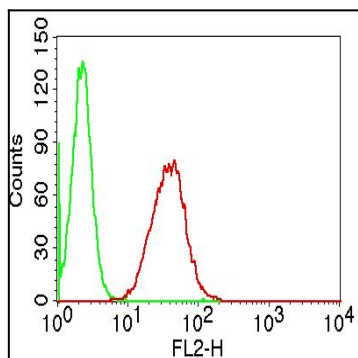


Figure:3- Intracellular flow analysis of Galectin-1 in A431 cell line using $0.5 \mu\text{g}/10^6$ cells of Galectin-1 antibody (Clone: ABM55A5). Green represents isotype control; red represents anti-Galectin-1 antibody (10-7619). Goat anti-mouse PE conjugate was used as secondary antibody