

## 11-13020: Polyclonal Antibody to CHIKV-nsP1

<b>Clonality :</b>	Polyclonal
<b>Application :</b>	WB,IF
<b>Format :</b>	Purified
<b>Isotype :</b>	Rabbit IgG
<b>Immunogen Information :</b>	A synthetic peptide was used as the immunogen for this antibody.

### Product Info

<b>Amount :</b>	25 µg / 100 µg
<b>Purification :</b>	Protein A Chromatography
<b>Content :</b>	25 µg in 50 µl/100 µg in 200 µl PBS containing 0.05% BSA and 0.05% sodium azide. Sodium azide is highly toxic.
<b>Storage condition :</b>	Store the antibody at 4°C; stable for 6 months. For long-term storage; store at -20°C. Avoid repeated freeze and thaw cycles.

### Application Note

Recommended dilutions: WB: 0.5-2 µg/ml, IFA: 6-9 µg/ml. However, this need to be optimized based on the research applications.

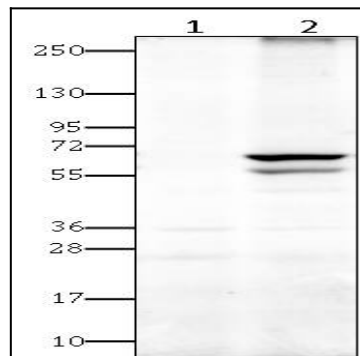


Figure-1: Western blot analysis of CHIKV-nsP1. Anti-CHIKV-nsP1 antibody (11-13020) was used at 0.7 µg/ml on (1) Mock infected and (2) Chikungunya virus infected Vero Cell lysates.

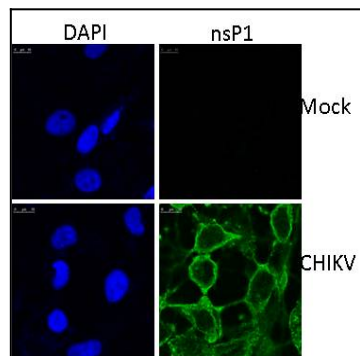


Figure-2: Immunofluorescence analysis of CHIKV-nsP1. Anti-CHIKV-nsP1 antibody (11-13020) was used at 7 µg/ml on Vero cells either Mock infected (upper panel) or infected with Chikungunya virus (down panel).