

## 11-2002: Polyclonal Antibody to SARS-CoV-2 Spike Protein

<b>Clonality :</b>	Polyclonal
<b>Application :</b>	ELISA,WB
<b>Format :</b>	Purified
<b>Isotype :</b>	Rabbit IgG
<b>Immunogen Information :</b>	A partial length recombinant coronavirus Spike Protein (amino acids 1100-1260) was used as the immunogen for this antibody.

### Product Info

<b>Amount :</b>	25 µg / 100 µg
<b>Purification :</b>	Protein A Chromatography
<b>Content :</b>	25 µg in 50 µl/100 µg in 200 µl PBS containing 0.05% BSA and 0.05% sodium azide. Sodium azide is highly toxic.
<b>Storage condition :</b>	Store the antibody at 4°C, stable for 6 months. For long-term storage, store at -20°C. Avoid repeated freeze and thaw cycles.

### Application Note

Recommended dilutions: WB: 2-4 µg/ml. However, this need to be optimized based on the research applications.

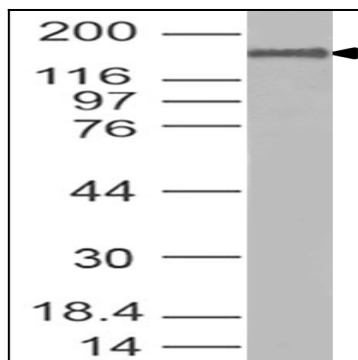


Fig1: Western Blot analysis of spike antibody: Anti- Spike antibody (COVID-19) was used at 2 µg/ml on full length COVID-19 Spike protein (150ng/ lane).