

### 36-1677: Monoclonal Antibody to CDw75 (B-Cell Marker)(Clone : LN-1)

<b>Clonality :</b>	Monoclonal
<b>Clone Name :</b>	LN-1
<b>Application :</b>	FACS,IF,IHC
<b>Reactivity :</b>	Human
<b>Gene :</b>	ST6GAL1
<b>Gene ID :</b>	6480
<b>Uniprot ID :</b>	P15907
<b>Format :</b>	Purified
<b>Alternative Name :</b>	ST6GAL1,SIAT1
<b>Isotype :</b>	Mouse IgM, kappa
<b>Immunogen Information :</b>	Nuclei from pokeweed mitogen-stimulated peripheral blood lymphocytes.

#### Description

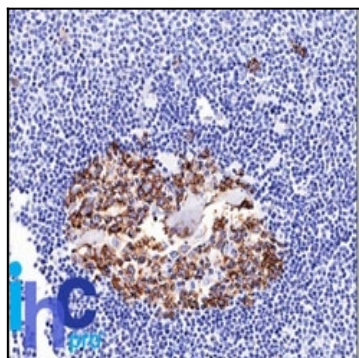
Recognizes a neuraminidase-sensitive sialoprotein (CDw75), present on cell membrane and cytoplasm of germinal center B-cells and derived lymphomas. This MAb reacts with RBC precursors of bone marrow, ductal and ciliated epithelial cells of kidney, breast, prostate, pancreas, lung, and with glioblastomas, astrocytomas, and Reed Sternberg cells in lymphocyte predominant Hodgkin s disease. It is shown to be a helpful antibody for ascribing a B-cell phenotype in known lymphoid tissues.

#### Product Info

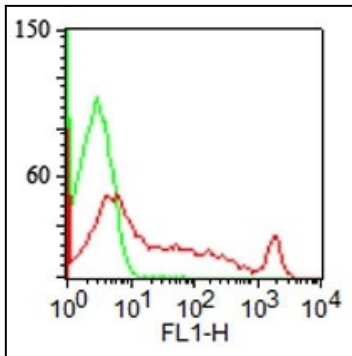
<b>Amount :</b>	100 µg
<b>Purification :</b>	Affinity Chromatography
<b>Content :</b>	100 µg in 500 µl PBS containing 0.05% BSA and 0.05% sodium azide. Sodium azide is highly toxic.
<b>Storage condition :</b>	Store the antibody at 4°C; stable for 6 months. For long-term storage; store at -20°C. Avoid repeated freeze and thaw cycles.

#### Application Note

Flow Cytometry (1-2ug/million cells); Immunofluorescence (1-2ug/ml); ,Immunohistochemistry (Formalin-fixed) (1-2ug/ml for 30 minutes at RT),(Staining of formalin-fixed tissues requires heating tissue sections in 10mM Tris with 1mM EDTA, pH 9.0, for 45 min at 95&degC followed by cooling at RT for 20 minutes);



Formalin-fixed, paraffin-embedded normal human Spleen stained with CDw75 Monoclonal Antibody (LN-1).



Surface staining of human lymphocytes with CDw75 Monoclonal Antibody (LN-1) (red) and isotype control (green). PPI negative population analyzed.