

10-10057: Anti Monkey Pox L1R Antibody (Clone: ABM4G5.1A3)

Clonality :	Monoclonal
Clone Name :	ABM4G5.1A3
Application :	ELISA, WB
Format :	Purified
Immunogen Information :	A partial length recombinant MonkeyPox L1R protein was used as the immunogen for this antibody.

Product Info

Amount :	25 µg / 100 µg
Purification :	Protein G Chromatography
Content :	25 µg in 50 µl/100 µg in 200 µl PBS containing 0.05% BSA and 0.05% sodium azide. Sodium azide is highly toxic.
Storage condition :	Store the antibody at 4°C, stable for 6 months. For long-term storage, store at -20°C. Avoid repeated freeze and thaw cycles.

Application Note

Recommended dilutions: ELISA: 0.5-2 µg/ml, WB:0.5-1 µg/ml. However, this need to be optimized based on the research applications.

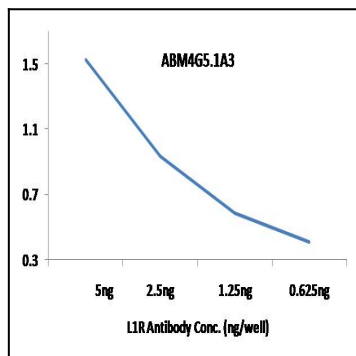


Figure-1: An indirect ELISA is carried out by coating L1R antigen in serial dilution from 5 ng/well to 0.625 ng/well and purified Anti-L1R monoclonal antibodies ABM4G5.1A3 was added at 100ng/well. Peroxidase conjugated Goat-Anti mouse antibody was used at 1:5000 dilution.

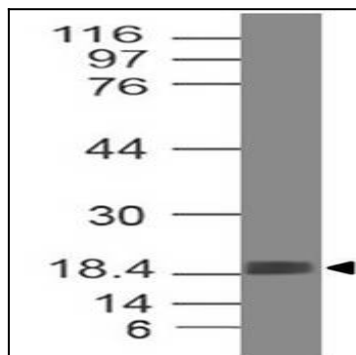


Figure-2: Western Blot analysis of MonkeyPox L1R Antibody: Anti-MonkeyPox L1R Antibody (Clone: ABM4G5.1A3) was used at 0.5 µg/ml on MonkeyPox L1R Recombinant protein