

## 11-12004: Polyclonal Antibody to KLF4

<b>Clonality :</b>	Polyclonal
<b>Application :</b>	WB
<b>Reactivity :</b>	Human
<b>Gene :</b>	KLF4
<b>Gene ID :</b>	9314
<b>Uniprot ID :</b>	O43474
<b>Format :</b>	Purified
<b>Alternative Name :</b>	KLF4,EZF,GKLF
<b>Isotype :</b>	Rabbit IgG
<b>Immunogen Information :</b>	A partial length recombinant KLF4 protein (amino acids 1-300) was used as the immunogen for this antibody.

### Description

Kruppel like factor 4 (KLF4) which are also called as gun enriched kruppel like factors (GKLF) is a member of SP/KLF family of zinc transcription factors that are involved in numerous important cellular processes, such as, proliferation, inflammation, apoptosis and somatic cell reprogramming. The Kruppel zinc finger transcription factor was initially identified in *Drosophila* as a segmented gene. This protein is found to inhibit cell proliferation by functioning as a cell cycle checkpoint protein that leads to activation of transcription of the cyclin-dependent kinase inhibitor. Clinically KLF4 plays a role in the pathogenesis of esophageal cancer and malaria. It has five isoform that are produced by alternate splicing. Expression of KLF4 is highly enriched in the post replicative epithelial cells of the intestine, skin and thymus.

### Product Info

<b>Amount :</b>	25 µg / 100 µg
<b>Purification :</b>	Protein A Chromatography
<b>Content :</b>	25 µg in 50 µl/100 µg in 200 µl PBS containing 0.05% BSA and 0.05% sodium azide. Sodium azide is highly toxic.
<b>Storage condition :</b>	Store the antibody at 4°C, stable for 6 months. For long-term storage, store at -20°C. Avoid repeated freeze and thaw cycles.

### Application Note

Western blot analysis: 2-4 µg/ml

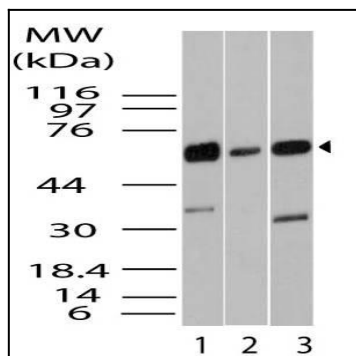


Fig-1: Western blot analysis of KLF4/GKLF. Anti- KLF4/GKLF antibody (11-12004) was used at 2  $\mu$ g/ml on 1) HCT-116, 2) HeLa and 3) A549 lysates.