

ABG2415: GCSm- γ rabbit pAb

Clonality :	Polyclonal
Application :	ELISA,IHC,WB,IF
Reactivity :	Monkey,Rat,Mouse,Human
Gene ID :	2730
Uniprot ID :	P48507
Alternative Name :	GCLM; GLCLR; Glutamate--cysteine ligase regulatory subunit; GCS light chain; Gamma-ECS regulatory subunit; Gamma-glutamylcysteine synthetase regulatory subunit; Glutamate--cysteine ligase modifier subunit
Immunogen Information :	The antiserum was produced against synthesized peptide derived from human GCSm-gamma. AA range:42-91

Description

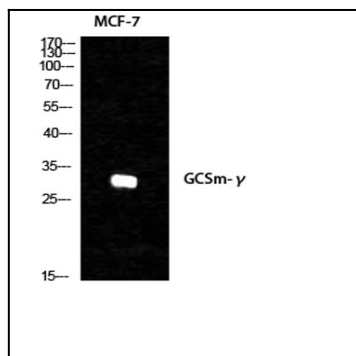
Glutamate-cysteine ligase, also known as gamma-glutamylcysteine synthetase, is the first rate limiting enzyme of glutathione synthesis. The enzyme consists of two subunits, a heavy catalytic subunit and a light regulatory subunit. Gamma glutamylcysteine synthetase deficiency has been implicated in some forms of hemolytic anemia. Alternative splicing results in multiple transcript variants encoding different isoforms.

Product Info

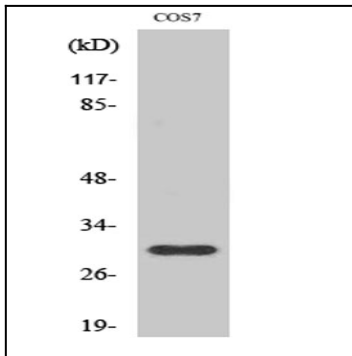
Amount :	100 μ l
Content :	1 mg/ml
Storage condition :	4°C/1 year

Application Note

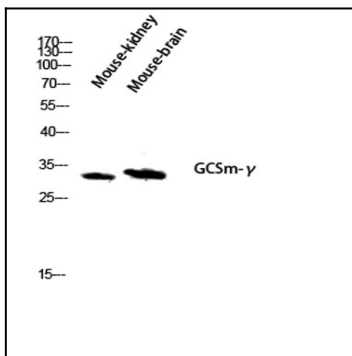
Western Blot: 1/500 - 1/2000. Immunohistochemistry: 1/100 - 1/300. ELISA: 1/10000. Not yet tested in other applications.



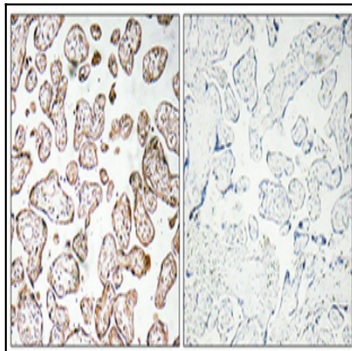
Western Blot analysis of various cells using GCSm- γ Polyclonal Antibody diluted at 1:1000



Western Blot analysis of COS7 cells using GCSm- γ Polyclonal Antibody diluted at 1:1000



Western blot analysis of Mouse-kidney mouse-brain lysis using GCSm- γ antibody. Antibody was diluted at 1:1000



Immunohistochemical analysis of paraffin-embedded Human placenta. Antibody was diluted at 1:100(4° overnight). High-pressure and temperature Tris-EDTA,pH8.0 was used for antigen retrieval. Negative contrl (right) obtained from antibody was pre-absorbed b