

36-1785: Monoclonal Antibody to SUMO-1(Clone : SM1/495)

Clonality :	Monoclonal
Clone Name :	SM1/495
Application :	FACS,IF,WB,IHC
Reactivity :	Human, Rat
Gene :	SUMO1
Gene ID :	7341
Uniprot ID :	P63165
Format :	Purified
Alternative Name :	SUMO1,SMT3C,SMT3H3,UBL1,OK/SW-cl.43
Isotype :	Mouse IgG1, kappa
Immunogen Information :	Recombinant human SUMO1 protein

Description

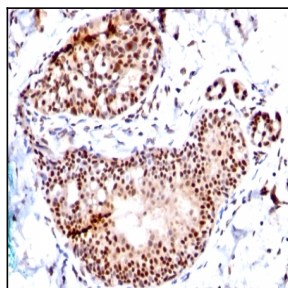
This MAbs is specific to SUMO-1 and shows no cross-reaction with either SUMO-2 or SUMO-3. The small ubiquitin-related modifier (SUMO) proteins, which include SUMO-1, SUMO-2 and SUMO-3, belong to the ubiquitin-like protein family. Like ubiquitin, the SUMO proteins are synthesized as precursor proteins that undergo processing before conjugation to target proteins. Also, both utilize the E1, E2, and E3 cascade enzymes for conjugation. However, SUMO and ubiquitin differ with respect to targeting. Ubiquitination predominantly targets proteins for degradation, whereas sumoylation targets proteins to a variety of cellular processing, including nuclear transport, transcriptional regulation, apoptosis and protein stability. The unconjugated SUMO-1 protein localizes to the nuclear membrane.

Product Info

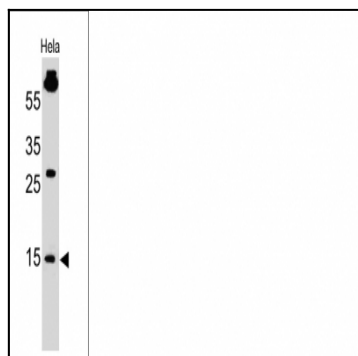
Amount :	100 µg
Purification :	Affinity Chromatography
Content :	100 µg in 500 µl PBS containing 0.05% BSA and 0.05% sodium azide. Sodium azide is highly toxic.
Storage condition :	Store the antibody at 4°C; stable for 6 months. For long-term storage; store at -20°C. Avoid repeated freeze and thaw cycles.

Application Note

Flow Cytometry (1-2ug/million cells); Immunofluorescence (1-2ug/ml); Western Blot (1-2ug/ml); Immunohistochemistry (Formalin-fixed) (1-2ug/ml for 30 minutes at RT)(Staining of formalin-fixed tissues requires heating tissue sections in 10mM Tris with 1mM EDTA, pH 9.0, for 45 min at 95°C followed by cooling at RT for 20 minutes);



Formalin-fixed, paraffin-embedded human Breast Carcinoma stained with SUMO-1 Monoclonal Antibody (SM1/495)



Western Blot of HeLa Cell Lysate using SUMO1 Monoclonal Antibody (SM1/495)