

### 36-1819: Monoclonal Antibody to Proximal Nephrogenic Antigen (Renal Cell Marker)(Clone : PN-15)

<b>Clonality :</b>	Monoclonal
<b>Clone Name :</b>	PN-15
<b>Application :</b>	FACS,IF,WB,IHC
<b>Reactivity :</b>	Human
<b>Gene :</b>	CA9
<b>Gene ID :</b>	768
<b>Uniprot ID :</b>	Q16790
<b>Format :</b>	Purified
<b>Alternative Name :</b>	CA9,G250,MN
<b>Isotype :</b>	Mouse IgG2b, kappa
<b>Immunogen Information :</b>	Microsomal fraction of human renal cortical tissue homogenate

#### Description

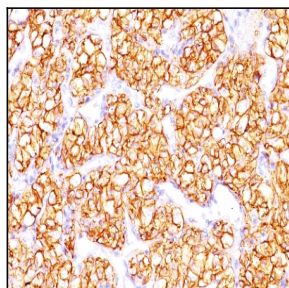
Recognizes a glycoprotein of ~200kDa, identified as carbonic anhydrase IX (CAIX/gp200). Its epitope resides in the carbohydrate domain of gp200. It shows no significant cross-reactivity with other carbohydrate determinants, such as the Lewis blood group antigens, epithelial membrane antigen, HMFG, and AB blood group antigens. In normal kidney, gp200 is localized along the brush border of the pars convoluta and pars recta segments of the proximal tubule, as well as focally along the luminal surface of Bowman's capsule adjoining the outgoing proximal tubule. Reportedly, gp200 is expressed by 93% of primary and 84% of metastatic renal cell carcinomas. This MAb may be useful in the investigations of carcinomas of proximal nephrogenic differentiation especially those showing tubular differentiation.

#### Product Info

<b>Amount :</b>	100 µg
<b>Purification :</b>	Affinity Chromatography
<b>Content :</b>	100 µg in 500 µl PBS containing 0.05% BSA and 0.05% sodium azide. Sodium azide is highly toxic.
<b>Storage condition :</b>	Store the antibody at 4°C; stable for 6 months. For long-term storage; store at -20°C. Avoid repeated freeze and thaw cycles.

#### Application Note

Flow Cytometry (1-2ug/million cells); Immunofluorescence (1-2ug/ml); Western Blot (1-2ug/ml); Immunohistochemistry (Formalin-fixed) (1-2ug/ml for 30 minutes at RT)(Staining of formalin-fixed tissues requires heating tissue sections in 10mM Tris with 1mM EDTA, pH 9.0, for 45 min at 95°C followed by cooling at RT for 20 minutes);



Formalin-fixed, paraffin-embedded human Renal Cell Carcinoma stained with PNA Monoclonal Antibody (PN-15).