

11-3041: Polyclonal Antibody to TLR1

Clonality :	Polyclonal
Application :	WB
Reactivity :	Mouse, Human
Gene :	TLR1
Gene ID :	7096
Uniprot ID :	Q15399
Format :	Purified
Alternative Name :	TLR1, KIAA0012
Isotype :	Rabbit IgG
Immunogen Information :	A partial length recombinant TLR1 protein (amino acids 300-500) was used as the immunogen for this antibody.

Description

Toll/interleukin-1 receptor-like protein (TLR1) is a member of the Toll-like receptor (TLR) family which has close similarity to Drosophila Toll homologs. Toll receptors are involved in mediating dorsoventral polarization in the developing Drosophila embryo. TLR1 is a type I transmembrane receptor that characteristically contains an extracellular domain consisting of several leucine-rich regions along with a single cytoplasmic Toll/IL-1R-like domain. TLRs generally exist as homodimers but TLR6 forms heterodimers with TLR2 and binds lipopeptide components of gram-positive and gram-negative bacterial cell walls. TLR1 is found to be involved in ocular toxoplasmosis, and leprosy. It is highly expressed in spleen, ovary, peripheral blood leukocytes, thymus and small intestine.

Product Info

Amount :	25 µg / 100 µg
Purification :	Protein A Chromatography
Content :	25 µg in 50 µl/100 µg in 200 µl PBS containing 0.05% BSA and 0.05% sodium azide. Sodium azide is highly toxic.
Storage condition :	Store the antibody at 4°C, stable for 6 months. For long-term storage, store at -20°C. Avoid repeated freeze and thaw cycles.

Application Note

Western blot analysis: 4-6 µg/ml

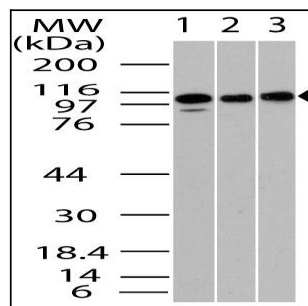


Fig-1: Western blot analysis of TLR1. Anti- TLR1 antibody (11-3041) was used at 4 µg/ml on (1) Jurkat, (2) EL4 and (3) Raji lysates.