

11-13002: Polyclonal Antibody to Beta Tubulin

Clonality :	Polyclonal
Application :	WB
Reactivity :	Rat,Mouse,Human
Gene :	TUBB2A
Gene ID :	7280
Uniprot ID :	Q13885
Format :	Purified
Alternative Name :	TUBB2A,TUBB2
Isotype :	Rabbit IgG
Immunogen Information :	A partial length recombinant Tubulin, beta protein (amino acids 200-444) was used as the immunogen for this antibody.

Description

Tubulin is one of several members of a small family of globular proteins and is the major constituent of microtubules. The most common members of the tubulin family are alpha-tubulin and beta-tubulin. It appears to play an important role in the formation of platelet. It is involved in the pathogenesis of Cortical dysplasia, complex, with other brain malformations 6 (CDCBM6) and distal hereditary motor neuropathy, type 2. Ubiquitously expressed with highest levels in spleen, thymus and immature brain. It is expressed exclusively in megakaryocytes and platelets in humans.

Product Info

Amount :	25 µg / 100 µg
Purification :	Protein A Chromatography
Content :	25 µg in 50 µl/100 µg in 200 µl PBS containing 0.05% BSA and 0.05% sodium azide. Sodium azide is highly toxic.
Storage condition :	Store the antibody at 4°C, stable for 6 months. For long-term storage, store at -20°C. Avoid repeated freeze and thaw cycles.

Application Note

Western blot analysis: 4-6 µg/ml

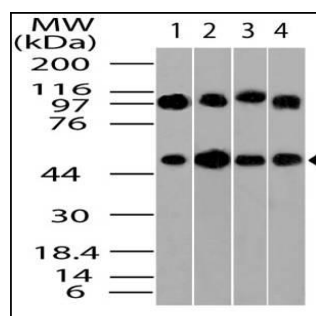


Figure-1: Western blot analysis of Beta Tubulin. Anti- Beta Tubulin antibody (11-13002) was used at 4 µg/ml on 1) A431, 2) HeLa, 3) MCF7 and 4) 3T3 lysates.

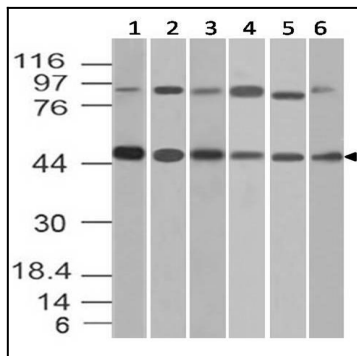


Figure-2: Western blot analysis of Beta Tubulin. Anti- Beta Tubulin antibody (11-13002) was used at 2 µg/ml on 1) C2C12, 2) 293, 3) K562, 4) PC3, (5) A549 and (6) BV2 lysates.

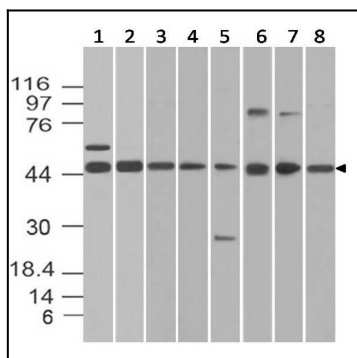


Figure-3: Western blot analysis of Beta Tubulin. Anti- Beta Tubulin antibody (11-13002) was used at 2 µg/ml on 1) m Spleen , 2) m Lung, 3) m Liver, 4) m Colon, (5) r Liver, (6) r Testis, (7) r Kidney and (8) r Ovary lysates.