

36-1967: Monoclonal Antibody to CD68 (Macrophage Marker)(Clone : C68/684)

Clonality :	Monoclonal
Clone Name :	C68/684
Application :	WB,IF,FACS,IHC
Reactivity :	Human, Mouse, Rat
Gene :	CD68
Gene ID :	968
Uniprot ID :	P34810
Format :	Purified
Alternative Name :	CD68
Isotype :	Mouse IgG1, kappa
Immunogen Information :	Recombinant human CD68 protein

Description

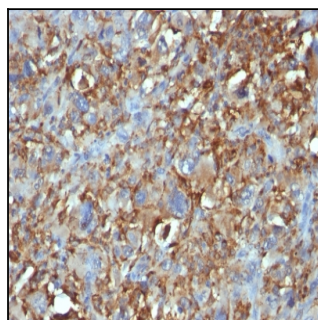
This antibody recognizes a glycoprotein of 110kDa, which is identified as CD68. It is important for identifying macrophages in tissue sections. It stains macrophages in a wide variety of human tissues, including Kupffer cells and macrophages in the red pulp of the spleen, in lamina propria of the gut, in lung alveoli, and in bone marrow. It reacts with myeloid precursors and peripheral blood granulocytes. It also reacts with plasmacytoid T cells, which are supposed to be of monocyte/macrophage origin. It shows strong granular cytoplasmic staining of chronic and acute myeloid leukemia and also reacts with rare cases of true histiocytic neoplasia. Lymphomas are negative or show few granules.

Product Info

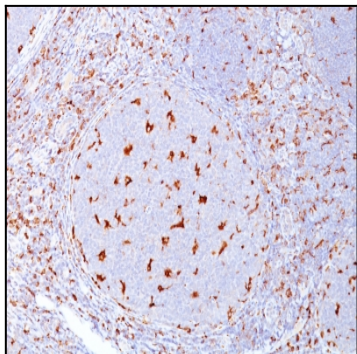
Amount :	100 µg
Purification :	Affinity Chromatography
Content :	100 µg in 500 µl PBS containing 0.05% BSA and 0.05% sodium azide. Sodium azide is highly toxic.
Storage condition :	Store the antibody at 4°C; stable for 6 months. For long-term storage; store at -20°C. Avoid repeated freeze and thaw cycles.

Application Note

Western Blot (1-2ug/ml);Immunofluorescence (1-2ug/ml);Flow Cytometry (1-2ug/million cells); Immunohistochemistry (Formalin-fixed) (1-2ug/ml for 30 minutes at RT) (Staining of formalin-fixed tissues requires heating tissue sections in 10mM Tris with 1mM EDTA, pH 9.0, for 45 min at 95°C followed by cooling at RT for 20 minutes);



Formalin-fixed, paraffin-embedded human Histiocytoma stained with CD68 Monoclonal Antibody (C68/684).



Formalin-fixed, paraffin-embedded human Tonsil stained with CD68 Monoclonal Antibody (C68/684).