

36-11020: Monoclonal Antibody to Plasma Cell Marker(Clone : LIV3G11; same as 7B18)

Clonality :	Monoclonal
Clone Name :	LIV3G11; same as 7B18
Application :	IHC
Reactivity :	Human
Format :	Purified
Isotype :	Mouse IgG2a, kappa
Immunogen Information :	Pancreatic cancer-related mucin

Description

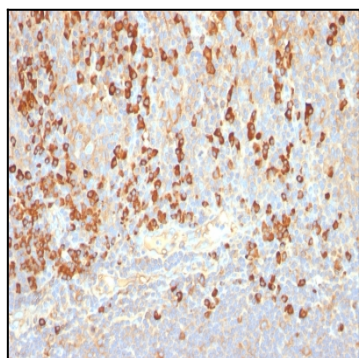
It recognizes an intra-cytoplasmic antigen, which shows a very high degree of specificity for plasma cells. This antigen is present in normal as well as neoplastic plasma cells. Plasma cells, which are large lymphocytes derived from an antigen-specific B cell, secrete antibodies and are responsible for humoral immunity. Plasma cells differentiate from B cells upon stimulation by CD4+ lymphocytes. The B cell acts as an antigen-presenting cell (APC), consuming an offending pathogen, which is taken up by the B cell by phagocytosis and broken down within proteosomes. Plasma cells contain basophilic cytoplasm; their nucleus contains heterochromatin organized in a characteristic cartwheel arrangement. This MAb superbly recognizes normal and neoplastic plasma cells in routine formalin-fixed, paraffin-embedded tissue sections. It is of potential value in identifying myeloma or plasmacytoma in bone marrow or other tissues. It also helps differentiate lympho-plasmacytoid lymphoma from lymphocytic and follicular lymphoma. Note that this MAb is not suitable for staining frozen tissues.

Product Info

Amount :	100 µg
Purification :	Affinity Chromatography
Content :	100 µg in 500 µl PBS containing 0.05% BSA and 0.05% sodium azide. Sodium azide is highly toxic.
Storage condition :	Store the antibody at 4°C; stable for 6 months. For long-term storage; store at -20°C. Avoid repeated freeze and thaw cycles.

Application Note

Immunohistochemistry (Formalin-fixed) (0.1-0.2ug/ml for 30 minutes at RT) [(Staining of formalin-fixed tissues requires heating tissue sections in 10mM Tris with 1mM EDTA, pH 9.0, for 45 min at 95°C followed by cooling at RT for 20 minutes);



Formalin-fixed, paraffin-embedded human Tonsil stained with Plasma Cell Marker Monoclonal Antibody (LIV3G11).