

36-11052: Monoclonal Antibody to Myeloid Cell Marker (Macrophage / Granulocyte Marker)(Clone : SPM298)

Clonality :	Monoclonal
Clone Name :	SPM298
Application :	FACS,IF,IHC
Reactivity :	Human
Format :	Purified
Isotype :	Mouse IgG1, kappa
Immunogen Information :	Human peripheral blood mononuclear cells

Description

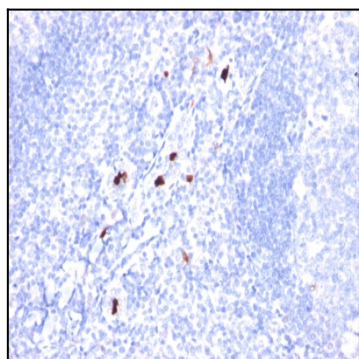
Recognizes 183kDa protein with DNA-binding characteristics, which is identified as a myeloid specific antigen. BM-1 reacts with myeloid precursor cells and granulocytes in bone marrow. Its antigen appears to be restricted to M2 and M3 acute myelogenous leukemia (AML) subtypes. Markers of myeloid cells are useful in the identification of different levels of cellular differentiation. BM-1 and BM-2 antibodies react with early precursor and mature forms of human myeloid cells. BM-1 MAb is useful in the identification of myelogenous leukemias, distinguishing granulocytic sarcomas from lymphoid malignancies and also in the study of differentiation and transformation of human myeloid cells. The biological function of this antigen is not clear, although it has been proposed that BM-1 may play a role in the differentiation of myeloid cells.

Product Info

Amount :	100 µg
Purification :	Affinity Chromatography
Content :	100 µg in 500 µl PBS containing 0.05% BSA and 0.05% sodium azide. Sodium azide is highly toxic.
Storage condition :	Store the antibody at 4°C; stable for 6 months. For long-term storage; store at -20°C. Avoid repeated freeze and thaw cycles.

Application Note

Flow Cytometry (1-2ug/million cells); Immunofluorescence (1-2ug/ml); Immunohistochemistry (Formalin-fixed) (1-2ug/ml for 30 minutes at RT) (No special pretreatment is required for staining of formalin/paraffin tissues.)



Formalin-fixed, paraffin-embedded human Tonsil stained with Myeloid specific Monoclonal Antibody (SPM298).