

### 36-11068: Monoclonal Antibody to Macrophage & Histiocytoma Marker(Clone : D11)

<b>Clonality :</b>	Monoclonal
<b>Clone Name :</b>	D11
<b>Application :</b>	IHC
<b>Reactivity :</b>	Human
<b>Format :</b>	Purified
<b>Isotype :</b>	Mouse IgG1, kappa
<b>Immunogen Information :</b>	Membrane preparation from human hepatocytes

#### Description

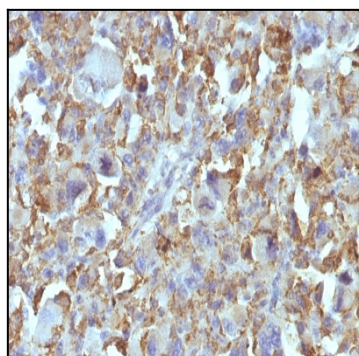
In Western blotting, it detects an antigen of 125kDa in human liver and 135kDa in tumors of histiocytic origin. Comparative study of this MAb and a standard CD68 MAb showed that their antigens are different. Its antigen in all macrophage types studied is located on the plasma membrane and within cytoplasmic structures including lysosomes. This MAb shows a restricted reactivity to cells of the monocyte/macrophage system. It specifically reacts with blood monocytes and stains resident macrophages in a wide variety of human tissues. This MAb does not stain antigen-presenting cells, e.g., Langerhans cells. Reportedly, its reactivity is restricted to histiocytes and macrophages.

#### Product Info

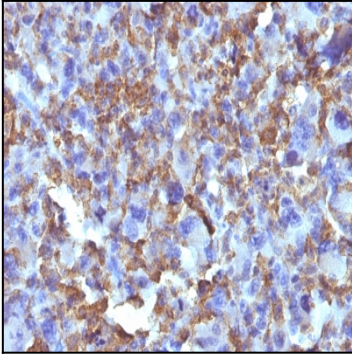
<b>Amount :</b>	100 µg
<b>Purification :</b>	Affinity Chromatography
<b>Content :</b>	100 µg in 500 µl PBS containing 0.05% BSA and 0.05% sodium azide. Sodium azide is highly toxic.
<b>Storage condition :</b>	Store the antibody at 4°C; stable for 6 months. For long-term storage; store at -20°C. Avoid repeated freeze and thaw cycles.

#### Application Note

Immunohistochemistry (Formalin-fixed) (1-2ug/ml for 30 minutes at RT)(Staining of formalin-fixed tissues requires heating tissue sections in 10mM Tris with 1mM EDTA, pH 9.0, for 45 min at 95°C followed by cooling at RT for 20 minutes);



Formalin-fixed, paraffin-embedded human Histiocytoma stained with Macrophage Monoclonal Antibody (D11).



Formalin-fixed, paraffin-embedded human Histiocytoma stained with Macrophage Monoclonal Antibody (D11).