

36-11080: Monoclonal Antibody to Actin, Muscle Specific (Muscle Cell Marker)(Clone : MSA/953)

Clonality :	Monoclonal
Clone Name :	MSA/953
Application :	WB,IHC
Reactivity :	Human, Rat
Gene :	ACTA2
Gene ID :	59
Uniprot ID :	P62736
Format :	Purified
Alternative Name :	ACTA2,ACTSA,ACTVS,GIG46
Isotype :	Mouse IgG1, kappa
Immunogen Information :	Synthetic peptide common among human muscle actins

Description

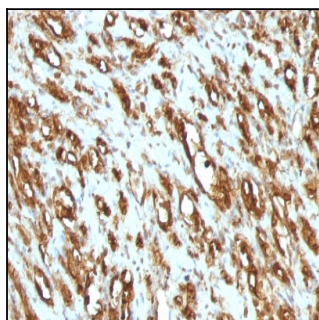
This antibody recognizes actin of skeletal, cardiac, and smooth muscle cells. It is not reactive with other mesenchymal cells except for myoepithelium. Actin can be resolved on the basis of its isoelectric points into three distinctive components: alpha, beta, and gamma in order of increasing isoelectric point. Anti-muscle specific actin recognizes alpha and gamma isotypes of all muscle groups. Non-muscle cells such as vascular endothelial cells and connective tissues are non-reactive. Also, neoplastic cells of non-muscle-derived tissue such as carcinomas, melanomas, and lymphomas are negative. It stains tumors of smooth muscle (leiomyomas and leiomyosarcomas) as well as skeletal muscle (rhabdomyomas and rhabdomyosarcomas).

Product Info

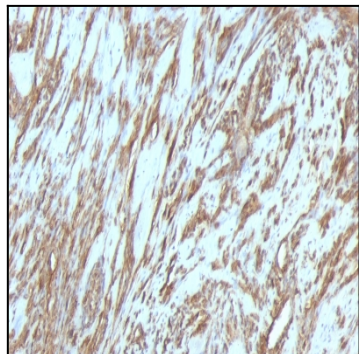
Amount :	100 µg
Purification :	Affinity Chromatography
Content :	100 µg in 500 µl PBS containing 0.05% BSA and 0.05% sodium azide. Sodium azide is highly toxic.
Storage condition :	Store the antibody at 4°C; stable for 6 months. For long-term storage; store at -20°C. Avoid repeated freeze and thaw cycles.

Application Note

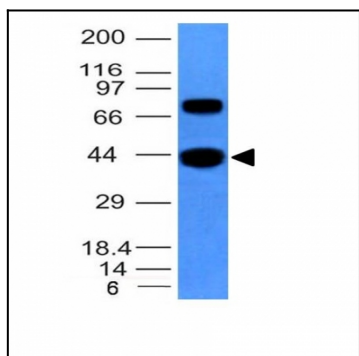
Western Blot (0.5-1.0ug/ml); Immunohistochemistry (Formalin-fixed) (0.5-2ug/ml for 30 minutes at RT), (Staining of formalin-fixed tissues requires heating tissue sections in 10mM Tris with 1mM EDTA, pH 9.0, for 45 min at 95 °C followed by cooling at RT for 20 minutes),



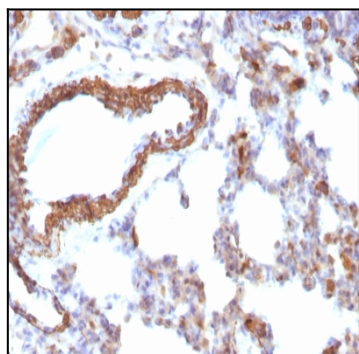
Formalin-fixed, paraffin-embedded human Rhabdomyosarcoma stained with Muscle Specific Actin Monoclonal Antibody (MSA/953)



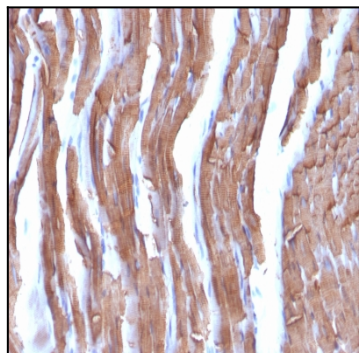
Formalin-fixed, paraffin-embedded human Leiomyosarcoma stained with Muscle Specific Actin Monoclonal Antibody (MSA/953)



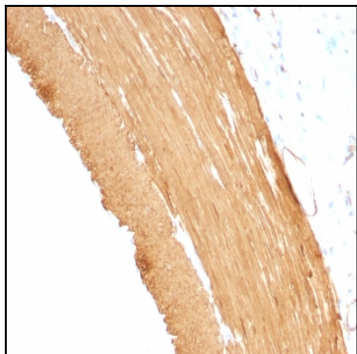
Western Blot of hSKM Cell Lysate using Muscle Specific Actin Monoclonal Antibody (MSA/953)



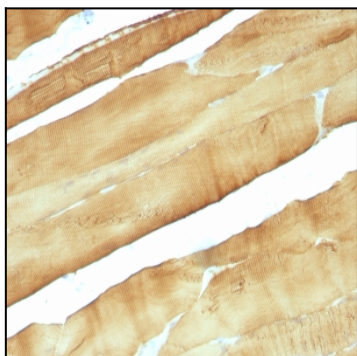
Formalin-fixed, paraffin-embedded Rat Lung stained with Muscle Specific Actin Monoclonal Antibody (MSA/953)



Formalin-fixed, paraffin-embedded Rat Heart stained with Muscle Specific Actin Monoclonal Antibody (MSA/953)



Formalin-fixed, paraffin-embedded Rat Stomach stained with Muscle Specific Actin Monoclonal Antibody (MSA/953)



Formalin-fixed, paraffin-embedded Rat Skeletal Muscle stained with Muscle Specific Actin Monoclonal Antibody (MSA/953)