

36-11097: Monoclonal Antibody to Cytokeratin, Basic (Type II or HMW) (Epithelial Marker)(Clone : SPM591)

Clonality :	Monoclonal
Clone Name :	SPM591
Application :	FACS,IF,WB,IHC
Reactivity :	Human, Mouse, Rat
Gene :	KRT1
Gene ID :	3848
Uniprot ID :	P04264
Format :	Purified
Alternative Name :	KRT1,KRTA
Isotype :	Mouse IgG1, kappa
Immunogen Information :	Solubilized keRatin extract from human stRatum corneumUnigeneMultiple

Description

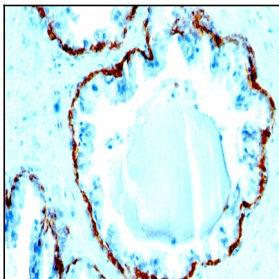
This antibody recognizes CK1, CK5, CK10 and CK14. In normal epithelia, it stains stratified epithelia, myoepithelial cells and basal cells in the prostate gland and bronchi. This MAb shows no reactivity with hepatocytes, pancreatic acinar cells, proximal renal tubules, or endometrial glands; there is no reactivity with cells derived from simple epithelia. Mesenchymal tumors, lymphomas, melanomas, neural tumors, and neuroendocrine tumors are negative with this antibody. It stains myoepithelial cells and has been shown to be useful in distinguishing prostate adenocarcinoma from benign prostate. This antibody has also been useful in separating benign from malignant intraductal breast proliferations.

Product Info

Amount :	100 µg
Purification :	Affinity Chromatography
Content :	100 µg in 500 µl PBS containing 0.05% BSA and 0.05% sodium azide. Sodium azide is highly toxic.
Storage condition :	Store the antibody at 4°C; stable for 6 months. For long-term storage; store at -20°C. Avoid repeated freeze and thaw cycles.

Application Note

Flow Cytometry (1-2ug/million cells); Immunofluorescence (1-2ug/ml); Western Blot (1-2ug/ml); Immunohistochemistry (Formalin-fixed) (1-2ug/ml for 30 min at RT)(Staining of formalin-fixed tissues requires heating tissue sections in 10mM Tris with 1mM EDTA, pH 9.0, for 45 min at 95°C followed by cooling at RT for 20 minutes);



Formalin-fixed, paraffin-embedded human Prostate Carcinoma stained with Cytokeratin, HMW Monoclonal Antibody (SPM591).