

### 36-11104: Monoclonal Antibody to Ep-CAM / CD326 (Rat) (Epithelial Marker)(Clone : SPM534)

<b>Clonality :</b>	Monoclonal
<b>Clone Name :</b>	SPM534
<b>Application :</b>	FACS,IF,WB,IP,IHC
<b>Reactivity :</b>	Rat
<b>Gene :</b>	Epcam
<b>Gene ID :</b>	171577
<b>Uniprot ID :</b>	O55159
<b>Format :</b>	Purified
<b>Alternative Name :</b>	Epcam,Tacstd1
<b>Isotype :</b>	Mouse IgG1, kappa
<b>Immunogen Information :</b>	Rat small intestine cells

#### Description

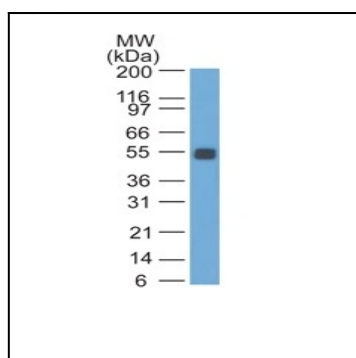
Epitope of GZ-1 and GZ-20 monoclonal antibodies are different. EGP40 is a 40-43kDa transmembrane epithelial glycoprotein, also identified as epithelial specific antigen (ESA), or epithelial cellular adhesion molecule (Ep-CAM). It is expressed on baso-lateral cell surface in most simple epithelia and a vast majority of carcinomas.

#### Product Info

<b>Amount :</b>	100 µg
<b>Purification :</b>	Affinity Chromatography
<b>Content :</b>	100 µg in 500 µl PBS containing 0.05% BSA and 0.05% sodium azide. Sodium azide is highly toxic.
<b>Storage condition :</b>	Store the antibody at 4°C; stable for 6 months. For long-term storage; store at -20°C. Avoid repeated freeze and thaw cycles.

#### Application Note

Flow Cytometry (5-10ul/million cells); Immunofluorescence (1:50-1:100); Western Blot (1:100-1:200); Immunoprecipitation (5-10ul/500ug protein lysate);Immunohistochemistry (Frozen & formalin-fixed) (1:100-1:200 for 30 min at RT)(Formalin/paraffin tissues REQUIRE digestion of tissue sections with pepsin at 1mg/ml Tris-HCl, pH 2.0 for 15 min at RT or 10 min at 37C)



Western Blot of rat Colon Lysate probed with Ep-CAM Monoclonal Antibody (SPM534).