

36-3015: Monoclonal Antibody to Insulin (Clone: 2D11-H5)

Clonality :	Monoclonal
Clone Name :	2D11-H5
Application :	FACS,IF,IHC
Reactivity :	Human
Gene :	INS
Gene ID :	3630
Uniprot ID :	P01308
Format :	Purified
Alternative Name :	INS
Isotype :	Mouse IgG1, kappa
Immunogen Information :	Human insulin conjugated to BSA was used as immunogen to generate the insulin antibody.

Description

Insulin is a secreted peptide hormone produced by the pancreas that regulates carbohydrate and lipid metabolism. Insulin is released from the pancreatic beta cells of the islets of Langerhans in response to secretagogues. Following its release, insulin quickly acts to both inhibit hepatic glucose production and stimulate peripheral blood glucose utilization. During this process cells in the liver, muscle, and fat are triggered to take up glucose and store it as glycogen, resulting in a decrease of blood glucose levels.

Product Info

Amount :	100 µg
Purification :	Protein G Chromatography
Content :	25 µg in 50 µl/100 µg in 200 µl PBS containing 0.05% BSA and 0.05% sodium azide. Sodium azide is highly toxic.
Storage condition :	Store the antibody at 4°C; stable for 6 months. For long-term storage; store at -20°C. Avoid repeated freeze and thaw cycles.

Application Note

Flow Cytometry (1-2ug/million cells); Immunofluorescence (1-2ug/ml); Immunohistochemistry (Formalin-fixed) (0.1-0.2ug/ml for 30 minutes at RT)(No special pretreatment is required for staining of formalin/paraffin tissues.)

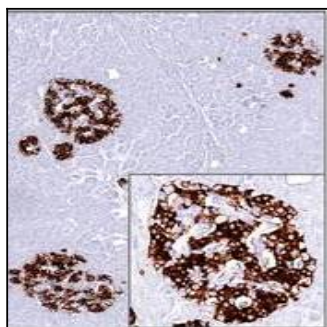


Fig: 1 Immunohistochemical analysis of Insulin in human pancreas using Insulin antibody (Clone: 2D11-H5) at 1:500 dilution.

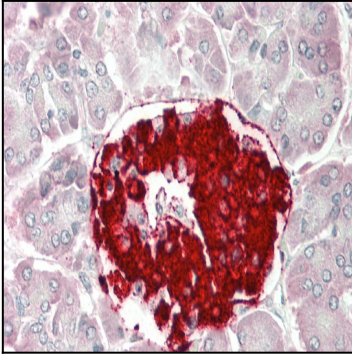


Fig: 2 Immunohistochemical analysis of Insulin in human pancreas tissue using Insulin antibody (Clone: 2D11-H5) at 5 μ g/ml.