

10-7526: Monoclonal Antibody to p21 (Clone: WA-1)

| | |
|--------------------------------|---|
| Clonality : | Monoclonal |
| Clone Name : | WA-1 |
| Application : | IHC,WB |
| Reactivity : | Human |
| Gene : | CDKN1A |
| Gene ID : | 1026 |
| Uniprot ID : | P38936 |
| Format : | Purified |
| Alternative Name : | CDKN1A,CAP20,CDKN1,CIP1,MDA6,PIC1,SDI1,WAF1 |
| Isotype : | Mouse IgG1 Kappa |
| Immunogen Information : | Recombinant human p21 protein was used as immunogen to generate the antibody. |

Description

p21, a member of the cycle dependent kinase (CDK) inhibitor family, was first identified as a tumor suppressor or anti-oncogenic protein and negative regulator of the cell cycle.

Product Info

| | |
|----------------------------|---|
| Amount : | 25 µg / 100 µg |
| Purification : | Protein G Chromatography |
| Content : | 25 µg in 50 µl/100 µg in 200 µl PBS containing 0.05% BSA and 0.05% sodium azide. Sodium azide is highly toxic. |
| Storage condition : | Store the antibody at 4°C; stable for 6 months. For long-term storage; store at -20°C. Avoid repeated freeze and thaw cycles. |

Application Note

Immunohistochemical analysis: 1:50-1:100, Western blot analysis: 2-4 µg/ml

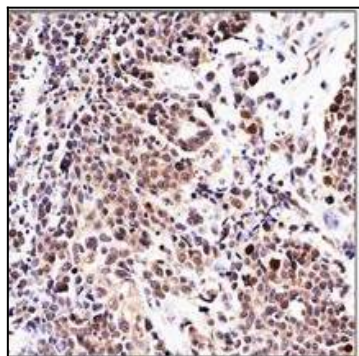


Figure-1: Immunohistochemical analysis of p21 in human urinary transitional cell carcinoma using p21 antibody (Clone: WA-1) at 1: 50 dilution.

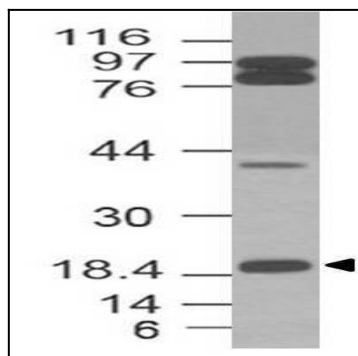


Figure-2: Western blot analysis of p21. Anti-p21 antibody (Clone: WA-1) was used at 2 μ g/ml in HCT-116 lysate.