

### 36-3029: Monoclonal Antibody to Estrogen Receptor (Clone: C-71)(Discontinued)

<b>Clonality :</b>	Monoclonal
<b>Clone Name :</b>	C-71
<b>Application :</b>	IHC,FACS
<b>Reactivity :</b>	Human
<b>Gene :</b>	ESR1
<b>Gene ID :</b>	2099
<b>Uniprot ID :</b>	P03372
<b>Format :</b>	Purified
<b>Alternative Name :</b>	ESR1,ESR,NR3A1
<b>Isotype :</b>	Mouse IgG1 Kappa
<b>Immunogen Information :</b>	A partial length recombinant human Estrogen Receptor alpha protein (amino acids 2-185) was used as immunogen for this antibody.

#### Description

The estrogen receptor (ER) is a ~ 67kDa protein. The estrogen receptor gene consists of more than 140kb of genomic DNA divided into 8 exons, being translated into a protein with six functionally discrete domains, labeled A through F. normal ER function. Many investigators have reported on the isolation of cDNAs which encode variant ER sequences.

#### Product Info

<b>Amount :</b>	100 µg
<b>Purification :</b>	Protein G Chromatography
<b>Content :</b>	25 µg in 50 µl/100 µg in 200 µl PBS containing 0.05% BSA and 0.05% sodium azide. Sodium azide is highly toxic.
<b>Storage condition :</b>	Store the antibody at 4°C; stable for 6 months. For long-term storage; store at -20°C. Avoid repeated freeze and thaw cycles.

#### Application Note

Immunohistochemical analysis: 1:25-100; Flowcytometry analysis: 0.5-2 µg/10<sup>6</sup> cells

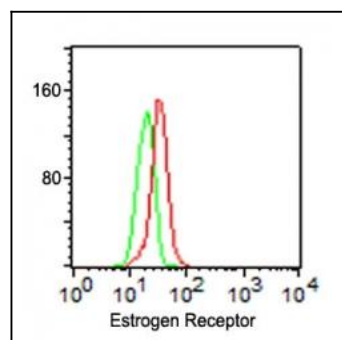


Fig: 1 Intracellular staining of the human breast cancer line MCF7 using Estrogen Receptor antibody (Clone: C-71) at 1µg/10<sup>6</sup> cells.

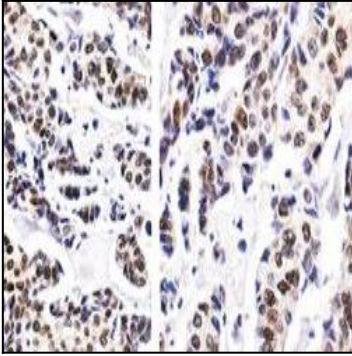


Fig: 2 Immunohistochemical analysis of Estrogen Receptor in human breast invasive ductal carcinoma using Estrogen Receptor antibody (Clone: C-71) at 1: 25 dilution.