

## 11-8020: Polyclonal Antibody to ACP1

<b>Clonality :</b>	Polyclonal
<b>Application :</b>	IHC,WB
<b>Reactivity :</b>	Human
<b>Gene :</b>	ACP1
<b>Gene ID :</b>	52
<b>Uniprot ID :</b>	P24666
<b>Format :</b>	Purified
<b>Alternative Name :</b>	ACP1
<b>Isotype :</b>	Rabbit IgG

**Immunogen Information :** Full length recombinant ACP1 protein was used as the immunogen for this antibody.

### Description

ACP1 (acid phosphatase 1, soluble) belongs to the phosphotyrosine protein phosphatase family of proteins. It functions as an acid phosphatase and a protein tyrosine phosphatase by hydrolyzing protein tyrosine phosphate to protein tyrosine and orthophosphate. ACP1 also hydrolyzes orthophosphoric monoesters to alcohol and orthophosphate. Diseases associated with ACP1 include okamoto syndrome and bubonic plague. It exists in four isoforms. ACP1 is expressed in adipose tissue, adrenal cortex, adrenal gland, amniotic fluid, amygdale. T-lymphocytes express only isoform 2.

### Product Info

<b>Amount :</b>	25 µg / 100 µg
<b>Purification :</b>	Protein A Chromatography
<b>Content :</b>	25 µg in 50 µl/100 µg in 200 µl PBS containing 0.05% BSA and 0.05% sodium azide. Sodium azide is highly toxic.
<b>Storage condition :</b>	Store the antibody at 4°C, stable for 6 months. For long-term storage, store at -20°C. Avoid repeated freeze and thaw cycles.

### Application Note

Western blot analysis: 2-4 µg/ml, Immunohistochemical analysis: 5 µg/ml

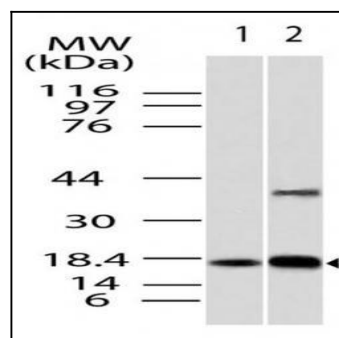


Fig-1: Western blot analysis of ACP 1 isoform C. Anti- ACP 1 isoform C antibody (11-8020) was used at 2 µg/ml on 1) HeLa and 2) HepG2 lysates.

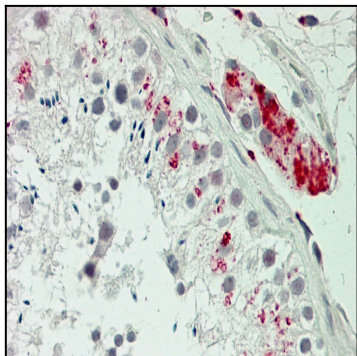


Fig-2: Immunohistochemical analysis of ACP 1 isoform C . Anti- ACP 1 isoform C antibody (11-8020) in human Testis tissue at 5 µg/ml.