

10-7576: Monoclonal antibody to Adipophilin (Clone: ABM4A83)

Clonality :	Monoclonal
Clone Name :	ABM4A83
Application :	WB
Reactivity :	Human
Gene :	PLIN2
Gene ID :	123
Uniprot ID :	Q99541
Format :	Purified
Alternative Name :	PLIN2,ADFP
Isotype :	Mouse IgG2b Kappa
Immunogen Information :	A partial length recombinant human Adipophilin protein (amino acids 210-421) was used as the immunogen for this antibody.

Description

Adipophilin (ADPH) or adipose differentiation-related protein (ADRP), is a member of the perilipin family of cytoplasmic lipid droplet (CLD)-binding proteins which was initially described in adipocytes and is considered a marker of lipid accumulation. It is a 50-kDa protein that is crucially dependent on triglyceride synthesis for stability. Adipophilin is found in many mammalian cell types, including hepatocytes, adipocytes, muscle cells, and mammary epithelial cells, either during development or in the mature functioning cell. Adipophilin is found associated with intracellular lipid droplets in a variety of cells and tissues that store or synthesize lipids. ADPH functions in lipid storage droplets (LSD) formation, fatty acid uptake, and milk lipid secretion; however, little is known about the structural or biochemical properties involved in its association with LSDs or how it accomplishes its biological functions.

Product Info

Amount :	25 µg / 100 µg
Purification :	Protein G Chromatography
Content :	25 µg in 50 µl/100 µg in 200 µl PBS containing 0.05% BSA and 0.05% sodium azide. Sodium azide is highly toxic.
Storage condition :	Store the antibody at 4°C; stable for 6 months. For long-term storage; store at -20°C. Avoid repeated freeze and thaw cycles.

Application Note

Western blot analysis: 2-4 µg/ml

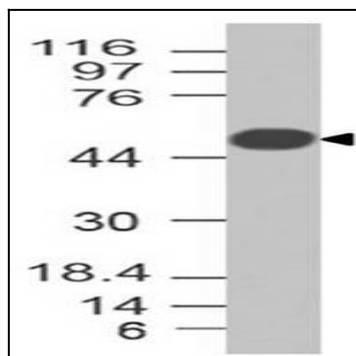


Figure-1: Expression analysis of Adipophillin. Anti-Adipophillin antibody (Clone: ABM4A83) was tested at 2 µg/ml on h Testis Lysate.