

10-7579: Monoclonal antibody to Antitrypsin (Clone: ABM48F6)

Clonality :	Monoclonal
Clone Name :	ABM48F6
Application :	WB
Reactivity :	Human
Gene :	SERPINA1
Gene ID :	5265
Uniprot ID :	P01009
Format :	Purified
Alternative Name :	SERPINA1,AAT,PI,PRO0684,PRO2209
Isotype :	Mouse IgG2a Kappa
Immunogen Information :	A partial length recombinant human Antitrypsin protein (amino acids 62-283) was used as the immunogen for this antibody.

Description

Alpha-1-antitrypsin (AAT) is a 52 kDa acute phase protein that acts as a broad-spectrum anti-inflammatory, immunomodulatory, anti-infective and tissue-repair molecule. It is produced primarily in hepatocytes and released into the blood circulation by the liver. AAT is present in all body tissues but appears to have its primary physiologic significance in the lungs, where it protects the healthy but fragile alveolar tissue from proteolytic damage by enzymes like neutrophil elastase. AAT deficiency is an under recognized hereditary disorder associated with the premature onset of chronic obstructive pulmonary disease, liver cirrhosis in children and adults, and less frequently, relapsing panniculitis, systemic vasculitis and other inflammatory, autoimmune and neoplastic diseases.

Product Info

Amount :	25 µg / 100 µg
Purification :	Protein G Chromatography
Content :	25 µg in 50 µl/100 µg in 200 µl PBS containing 0.05% BSA and 0.05% sodium azide. Sodium azide is highly toxic.
Storage condition :	Store the antibody at 4°C; stable for 6 months. For long-term storage; store at -20°C. Avoid repeated freeze and thaw cycles.

Application Note

Western blot analysis: 1-2 µg/ml

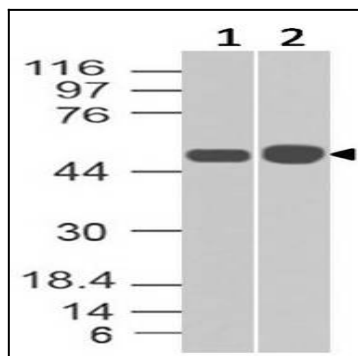


Figure-1: Expression analysis of Antitrypsin. Antitrypsin antibody (Clone: ABM48F6) was tested at 1 μ g/ml on (1) Snu1 and (2) Hela Lysates.