

10-7592: Monoclonal antibody to KRT76 (Clone: ABM51A8)

Clonality :	Monoclonal
Clone Name :	ABM51A8
Application :	WB
Reactivity :	Human
Gene :	KRT76
Gene ID :	51350
Uniprot ID :	Q01546
Format :	Purified
Alternative Name :	KRT76,KRT2B,KRT2P
Isotype :	Mouse IgG2a lambda
Immunogen Information :	A partial length recombinant protein of KRT76 (amino acid 145-362) was used as the immunogen for this antibody.

Description

Keratins are filament forming proteins of epithelial cells and are essential for normal tissue structure and function. In contrast to actin filaments and microtubules, keratins are encoded by a large family of genes clustered at two divergent chromosomal sites: 17q21.2 (type I keratins, except K18) and 12q13.13 (type II keratins, including K18). These are also expressed in tissue and differentiation state-specific manner and play an important role in protecting epithelial cells from mechanical and non-mechanical stress and injury. KRT76, a type II epithelial keratin (previously designated as K2p), is specifically expressed in the suprabasal cell layers of oral masticatory epithelium (the slightly orthokeratinized stratified squamous epithelium lining the gingiva and the hard palate). Loss of KRT76 leads to the acquisition and infection of skin wounds which fail to properly resolve over time. The gene is up-regulated during normal wound healing and is required for this process. At a mechanistic level it has been shown that loss of KRT76 is associated with defective tight junction function through the mislocalization of CLDN1 (Claudin1), an integral tight junction component which binds to KRT76.

Product Info

Amount :	25 µg / 100 µg
Purification :	Protein G Chromatography
Content :	25 µg in 50 µl/100 µg in 200 µl PBS containing 0.05% BSA and 0.05% sodium azide. Sodium azide is highly toxic.
Storage condition :	Store the antibody at 4°C; stable for 6 months. For long-term storage; store at -20°C. Avoid repeated freeze and thaw cycles.

Application Note

Western blot analysis: 0.5-1 µg/ml

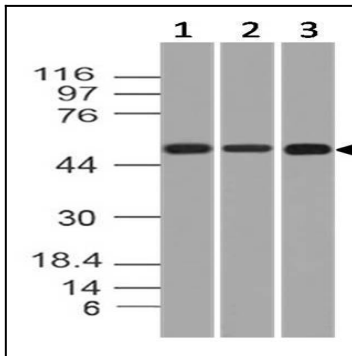


Fig:1- Expression analysis of KRT76. Anti-KRT76 antibody (Clone: ABM51A8) was tested at 0.5 μ g/ml on HeLa, MCF7 and A431 lysates.