

## 10-7593: Monoclonal antibody to NSE Gamma (Clone: ABM5D20)

<b>Clonality :</b>	Monoclonal
<b>Clone Name :</b>	ABM5D20
<b>Application :</b>	WB
<b>Reactivity :</b>	Human
<b>Gene :</b>	ENO2
<b>Gene ID :</b>	2026
<b>Uniprot ID :</b>	P09104
<b>Format :</b>	Purified
<b>Alternative Name :</b>	ENO2, 2-phospho-D-glycerate hydro-lyase, Enolase 2, Neural enolase
<b>Isotype :</b>	Mouse IgG2b Kappa
<b>Immunogen Information :</b>	A partial length recombinant protein from C terminal portion of h NSE Gamma was used as the immunogen for this antibody.

### Description

CLIP is a precursor of number of melanocortin peptides such as adrenocorticotrophic hormone and the melanocyte stimulating hormones (including alpha-MSH). These peptides are differentially produced within neurons by expression of specific cleavage enzymes. This protein is synthesised in neurons located in two main clusters in the mammalian brain—in the ARC( Arcuate Nucleus) of the hypothalamus and a smaller group of neurons in the NTS (Nucleus Of The Solitary Tract). CLIP deficiency causes severe obesity that begins at an early age. In addition to obesity, people with this condition have low levels of a hormone known as ACTH (Adrenocorticotrophic Hormone) and tend to have red hair and pale skin.

### Product Info

<b>Amount :</b>	25 µg / 100 µg
<b>Purification :</b>	Protein G Chromatography
<b>Content :</b>	25 µg in 50 µl/100 µg in 200 µl PBS containing 0.05% BSA and 0.05% sodium azide. Sodium azide is highly toxic.
<b>Storage condition :</b>	Store the antibody at 4°C; stable for 6 months. For long-term storage; store at -20°C. Avoid repeated freeze and thaw cycles.

### Application Note

Western blot analysis: 0.5-1 µg/ml

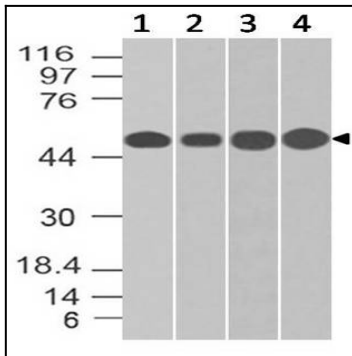


Fig:1- Expression analysis of NSE Gamma. NSE Gamma antibody (Clone: ABM5D20) was tested at 0.5  $\mu\text{g/ml}$  on (1) Jurkat, (2) A431, (3) 293 and (4) U87 lysates.