

## 11-8007: Polyclonal Antibody to CLIM1/PDLIM1

<b>Clonality :</b>	Polyclonal
<b>Application :</b>	IHC, WB
<b>Reactivity :</b>	Human
<b>Gene :</b>	PDLIM1
<b>Gene ID :</b>	9124
<b>Uniprot ID :</b>	O00151
<b>Format :</b>	Purified
<b>Alternative Name :</b>	PDLIM1, CLIM1, CLP36
<b>Isotype :</b>	Rabbit IgG
<b>Immunogen Information :</b>	A partial length recombinant CLIM1 protein (amino acids 116-329) was used as the immunogen for this antibody.

### Description

PDLIM1 (PDZ and LIM Domain 1) belongs to the enigma protein family. It contains two protein interacting domains, a PDZ domain at the amino terminal end and one to three LIM domains at the carboxy terminal. LIM domains are cysteine-rich double zinc fingers that are involved in protein-protein interactions. PDLIM1 has transcription coactivator activity and it may play a role as an adapter to bring other LIM-interacting proteins to the cytoskeleton. This gene is found to be highly expressed in the heart and skeletal muscle and moderately expressed in the spleen. PDLIM1 consists of 329 amino acids and is associated with hyperacusis and supra-aortic stenosis diseases.

### Product Info

<b>Amount :</b>	25 µg / 100 µg
<b>Purification :</b>	Protein A Chromatography
<b>Content :</b>	25 µg in 50 µl / 100 µg in 200 µl PBS containing 0.05% BSA and 0.05% sodium azide. Sodium azide is highly toxic.
<b>Storage condition :</b>	Store the antibody at 4°C, stable for 6 months. For long-term storage, store at -20°C. Avoid repeated freeze and thaw cycles.

### Application Note

Western blot analysis: 1-3 µg/ml, Immunohistochemical analysis: 5 µg/ml

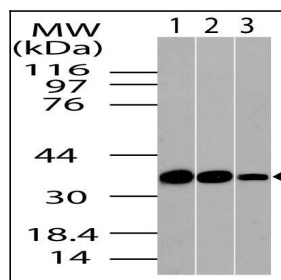


Fig-1: Western blot analysis of CLIM1. Anti- CLIM1 antibody (11-8007) was used at 1 µg/ml on 1) Heart, 2) SKM and 3) HepG2 lysates.

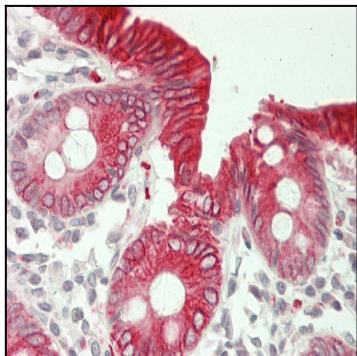


Fig-2: Immunohistochemical analysis of CLIM1. Anti-CLIM1 antibody (11-8007) in human Colon tissue at 5 µg/ml.