

10-3013-F: Monoclonal Antibody to TLR5 (Clone: ABM22G1) FITC conjugated

Clonality :	Monoclonal
Clone Name :	ABM22G1
Application :	FACS
Reactivity :	Human
Conjugate :	FITC
Gene :	TLR5
Gene ID :	7100
Uniprot ID :	O60602
Format :	Purified
Alternative Name :	TLR5,TIL3
Isotype :	Mouse IgG2a Kappa
Immunogen Information :	A partial length recombinant TLR5 protein (amino acids 261-420) was used as the immunogen for this antibody.

Description

Toll-like receptor 5 (TLR5) plays a fundamental role in pathogen recognition and downstream signaling to induce effective immunity. It is well expressed in major old tissues including lung, skin, intestine, and spleen. TLR5 is present in synovial of patients with rheumatoid arthritis (RA), act as novel mediator of innate immunity-induced osteoclastogenesis and bone loss. TLR5 is a receptor for flagellin and is present on the basolateral surface of intestinal epithelial cells. It is involved in the migration of intestinal epithelial cells through activation of the p38 MAPK pathway. TLR5-mediated signaling specifically enhanced the maturation of lung dendritic cells. TLR5 influences the progression and outcome of ovarian, sarcoma, and luminal breast tumors. Mutations in TLR5 have been associated with both resistance and susceptibility to systemic lupus erythematosus, and susceptibility to Legionnaire diseases

Product Info

Amount :	25 µg / 100 µg
Purification :	Protein G Chromatography
Content :	0.2 mg/ml in Tris buffer containing 0.05% Azide
Storage condition :	Store the antibody at 4°C, stable for 6 months.

Application Note

FACS analysis: 0.5-1 µg/10⁶ cells

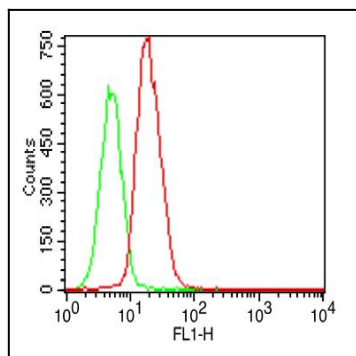


Fig-1: Intracellular flow analysis of hTLR5 FITC conjugated in hTLR5 transfected cell line using 0.5 µg/10⁶ cells of hTLR5 FITC conjugated antibody (Clone: ABM22G1). Green represents isotype control; red represents anti-hTLR5 FITC conjugated antibody.