

11-8002: Polyclonal Antibody to CYLD

Clonality :	Polyclonal
Application :	WB
Reactivity :	Human
Gene :	CYLD
Gene ID :	1540
Uniprot ID :	Q9NQC7
Format :	Purified
Alternative Name :	CYLD,CYLD1,KIAA0849,HSPC057
Isotype :	Rabbit IgG
Immunogen Information :	A partial length recombinant CYLD protein (amino acids 1-230) was used as the immunogen for this antibody.

Description

CYLD (Ubiquitin carboxyl-terminal hydrolase) belongs to peptidase C19 family with 956 amino acids. It is a cytoplasmic protein with three cytoskeletal-associated protein-glycine-conserved (CAP-GLY) domains which function as a deubiquitinating enzyme which specifically cleaves 'Lys-63'-linked polyubiquitin chains and 1 ubiquitin-specific proteases (USP) domain. CYLD plays an important role in the regulation of pathways leading to NF-kappa-B activation, proliferation and differentiation. It also interacts with (via CAP-Gly domain) IKBKG/NEMO (via proline-rich C-terminal region). CYLD is important for the survival of immature natural killer cells whereas it is not required for the maturation of intrathymic natural killer cells. It is detected in fetal brain, testis and skeletal muscle, and at a lower level in adult brain, leukocytes, liver, heart, kidney, spleen, ovary and lung. Isoform 2 is found in all tissues except kidney. CYLD related diseases are multiple familial trichoepithelioma 1 and familial cylindromatosis.

Product Info

Amount :	25 µg / 100 µg
Purification :	Protein A Chromatography
Content :	25 µg in 50 µl/100 µg in 200 µl PBS containing 0.05% BSA and 0.05% sodium azide. Sodium azide is highly toxic.
Storage condition :	Store the antibody at 4°C, stable for 6 months. For long-term storage, store at -20°C. Avoid repeated freeze and thaw cycles.

Application Note

Western blot analysis: 2-4 Åµg/ml

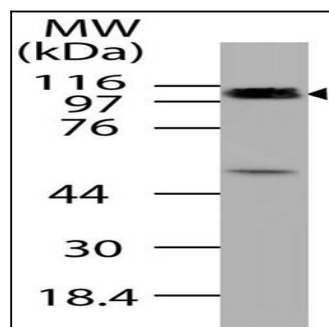


Fig-1: Western blot analysis of CYLD . Anti-CYLD antibody (11-8002) was used at 2 µg/ml on HepG2 lysate.