

10-3029-F: Monoclonal Antibody to mTLR9 (Clone: ABM4D70)-FITC Conjugated

Clonality :	Monoclonal
Clone Name :	ABM4D70
Application :	FACS
Reactivity :	Mouse
Conjugate :	FITC
Gene :	Tlr9
Gene ID :	81897
Uniprot ID :	Q9EQU3
Format :	Purified
Alternative Name :	Tlr9
Isotype :	Rat IgG2a Kappa
Immunogen Information :	A partial length recombinant mTLR9 protein (amino acids 602-860) was used as the immunogen for this antibody.

Description

Mouse Toll-like receptor 9 (mTLR9) is an innate immune sensor for microbial DNA that erroneously responds to self DNA in autoimmune disease. TLR9 is normally expressed in endosomes/lysosomes where it is activated by pathogen-derived DNA. It has modulatory effect on the mucosal immune system, influence susceptibility to allergic sensitization to foods (22718261). TLR9 recognizes unmethylated CpG-containing DNA commonly found in bacteria. TLR9 signaling plays an important role in the development of robust protective immunity, proper recruitment and function of effector cells (lymphocytes and macrophages), and, ultimately, effective cryptococcal clearance from the infected lungs (20581055). It is involved in the pathogenesis of cardiovascular diseases, such as hypertension and heart failure.

Product Info

Amount :	25 µg / 100 µg
Purification :	Protein G Chromatography
Content :	0.2 mg/ml in Tris buffer containing 0.05% Azide
Storage condition :	Store the antibody at 4°C; stable for 6 months.

Application Note

FACS: 0.25-1 µg/10⁶ cells

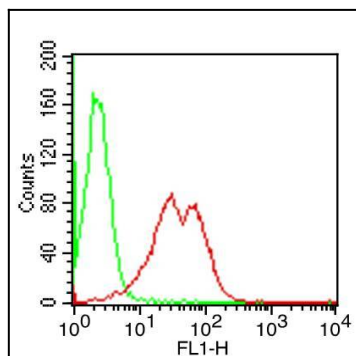


Fig-1: Intracellular flow analysis of FITC-conjugated mTLR9 antibody in mouse splenocytes using 0.25 $\mu\text{g}/10^6$ cells of FITC-conjugated mTLR9 antibody (Clone: ABM4D70). Green represents isotype control; red represents anti-mTLR9 antibody conjugated with FITC.