

11-3008: Polyclonal Antibody to NALP2

Clonality :	Polyclonal
Application :	WB
Reactivity :	Human
Gene :	NLRP2
Gene ID :	55655
Uniprot ID :	Q9NX02
Format :	Purified
Alternative Name :	NACHT, LRR and PYD domains-containing protein 2, Nucleotide-binding site protein 1, PYRIN domain and NACHT domain-containing protein 1, PYRIN-containing APAF1-like protein 2
Isotype :	Rabbit IgG
Immunogen Information :	A partial recombinant NALP2 protein (amino acids 844-1060) was used as the immunogen for this antibody.

Product Info

Amount :	25 µg / 100 µg
Purification :	Protein A Chromatography
Content :	25 µg in 50 µl/100 µg in 200 µl PBS containing 0.05% BSA and 0.05% sodium azide. Sodium azide is highly toxic.
Storage condition :	Store the antibody at 4°C, stable for 6 months. For long-term storage, store at -20°C. Avoid repeated freeze and thaw cycles.

Application Note

Western blot analysis: 0.5-1 µg/ml

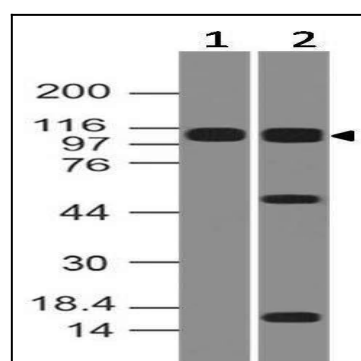


Figure-1: Expression analysis of NALP2. Anti-NALP2 antibody (11-3008) was used at 0.5 µg/ml on (1) A431 and (2) K562 lysates.